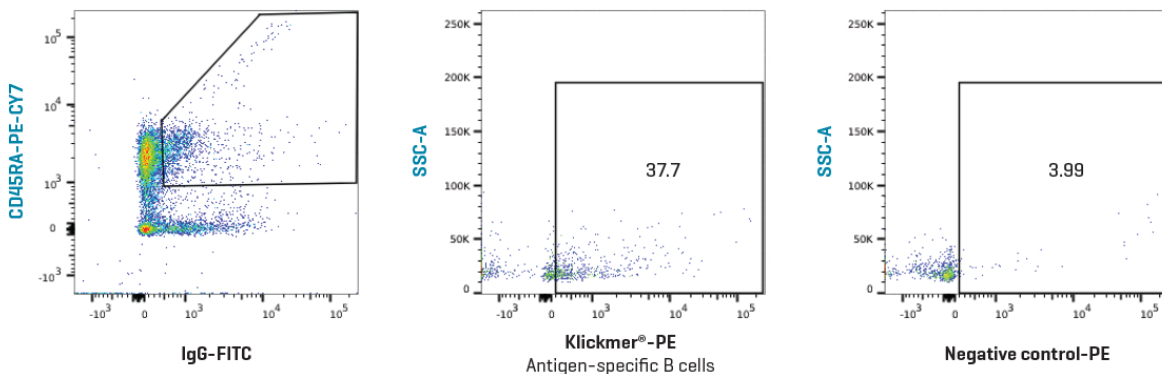
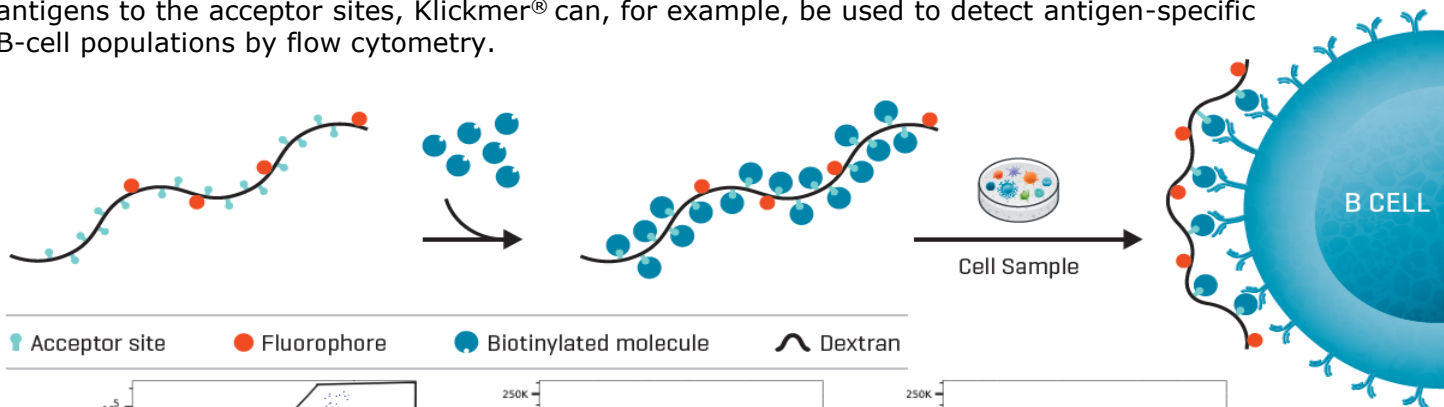


## Unravel Immunity with Your Customized Klickmer®

Based on the Dextramer® technology adapted to carry multiple universal acceptor sites, Klickmer® reagents offer unprecedented avidity for any well-defined binding target. Combine Klickmer® reagents with your choice of biotinylated molecules to create tailored multimers that efficiently bind immune cells, cancer cells, infected cells and much more.

With optimized loading capacity, Klickmer® reagents facilitate the detection of conventional and non-conventional cell populations via flow cytometry and in-situ staining. By attaching B-cell antigens to the acceptor sites, Klickmer® can, for example, be used to detect antigen-specific B-cell populations by flow cytometry.



Detection of antigen-specific B cells using customized Klickmer® reagents in mouse lymph nodal cells. Antigen-specific B cells were gated in the antibody producing, non-plasma B-cell population.

## Try Our Special Offer!

Klickmer® reagents are now available with a **10% discount**.

To order your Klickmer® please send an e-mail to [bio@perlan.com.pl](mailto:bio@perlan.com.pl) by specifying your choice of:

- Fluorophore (PE, APC, FITC, None)
- Test size: 200 uL (~ 100 tests)

### Terms and Conditions

Include your discount code: **IMM.2022**

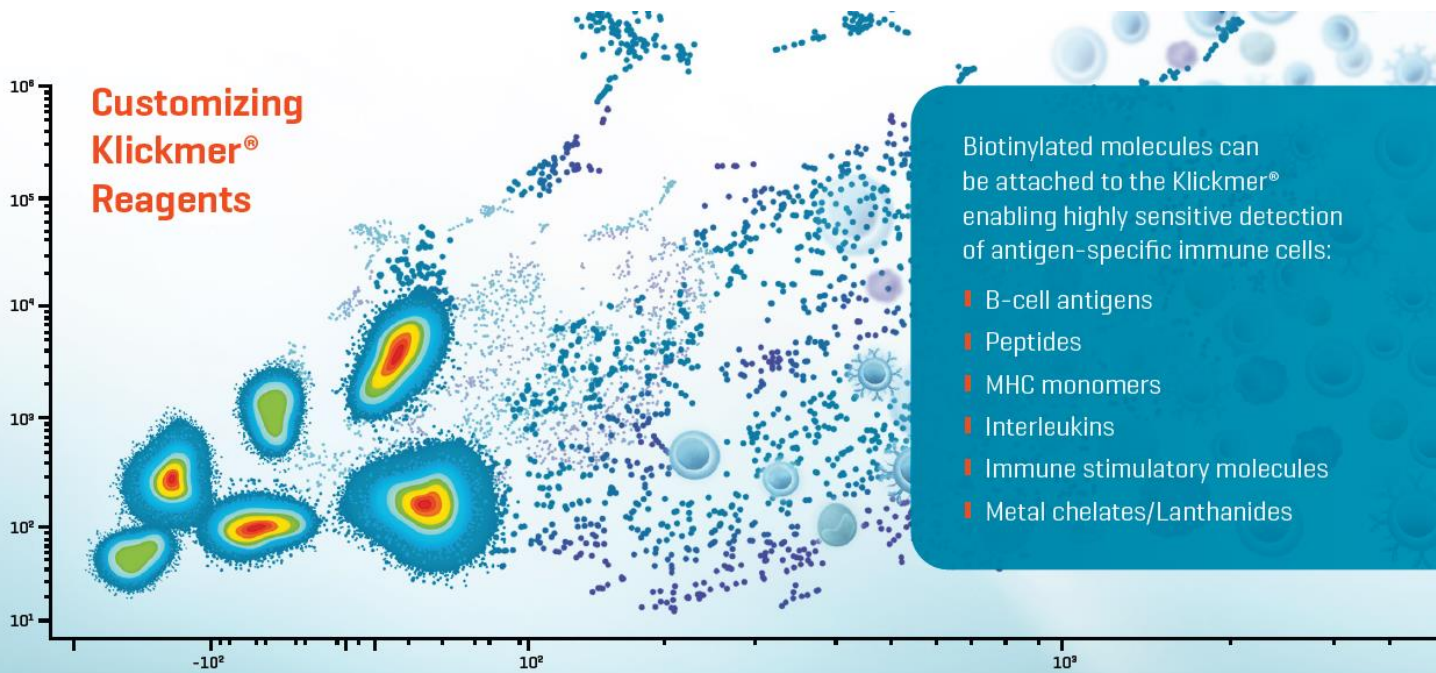
Promotion expires on 30<sup>th</sup> of June. Valid only in Poland from May. Promotion is valid for the tests size reported on this flyer.

Contact us: [bio@perlan.com.pl](mailto:bio@perlan.com.pl)

**Local distributor**



Perlan Technologies Polska Sp. z o.o.  
ul. Puławska 303  
02-785 Warszawa | Polska  
[bio@perlan.com.pl](mailto:bio@perlan.com.pl)



## References

- Wolf D, et al. Pathogenic Autoimmunity in Atherosclerosis Evolves From Initially Protective Apolipoprotein B 100-Reactive CD4 + T-Regulatory Cells. *Circulation*. 2020 Sep 29;142(13):1279-1293.
- Greenshields-Watson A, et al. CD4+ T Cells Recognize Conserved Influenza A Epitopes through Shared Patterns of V-Gene Usage and Complementary Biochemical Features. *Cell Rep*. 2020 Jul 14;32(2):107885.
- Johnston RJ, et al. VISTA is an acidic pH-selective ligand for PSGL-1. *Nature*. 2019;574(7779):565-570.
- Dolton G, et al. Optimized Peptide-MHC Multimer Protocols for Detection and Isolation of Autoimmune T-Cells. *Front Immunol*. Published 2018 Jun 29. 2018;9:1378.
- Luque S, et al. A multicolour HLA-specific B-cell FluoroSpot assay to functionally track circulating HLA-specific memory B cells. *J Immunol Methods*. 2018;462:23-33.
- Bentzen AK, et al. T cell receptor fingerprinting enables in-depth characterization of the interactions governing recognition of peptide-MHC complexes [published online ahead of print, 2018 Nov 19]. *Nat Biotechnol*. 2018;10.1038/nbt.4303.
- Chancellor A, et al. CD1b-restricted GEM T cell responses are modulated by Mycobacterium tuberculosis mycolic acid meromycolate chains. *Proc Natl Acad Sci U S A*. 2017;114(51):E10956-E10964.
- Massilamany C, et al. Major Histocompatibility Complex Class II Dextramers: New Tools for the Detection of antigen-Specific, CD4 T Cells in Basic and Clinical Research. *Scand J Immunol*. 2015;82(5):399-408.
- Neller MA, et al. Naive CD8+ T-cell precursors display structured TCR repertoires and composite antigen-driven selection dynamics. *Immunol Cell Biol*. 2015;93(7):625-633.

## Terms and Conditions

Include your discount code: **IMM.2022**

Promotion expires on 30<sup>th</sup> of June. Valid only Poland from May. Promotion is valid for the tests size reported on this flyer.

Contact us: [bio@perlan.com.pl](mailto:bio@perlan.com.pl)

## Local distributor



Perlan Technologies Polska Sp. z o.o.  
ul. Puławska 303  
02-785 Warszawa | Polska  
[bio@perlan.com.pl](mailto:bio@perlan.com.pl)

© Immudex ApS Denmark, 2021

For research use only. Not for use in diagnostic or therapeutic procedures.