

HPLC Spares Catalog



Contact Us

Kinesis Limited

9 Orion Court, Ambuscade Road, Colmworth Business Park,
St Neots, Cambs, PE19 8YX, United Kingdom
Tel: +44 (0)1480 212122
Fax: +44 (0)1480 212111
E-mail: sales@kinesis.co.uk
kinesis.co.uk

Kinesis Incorporated

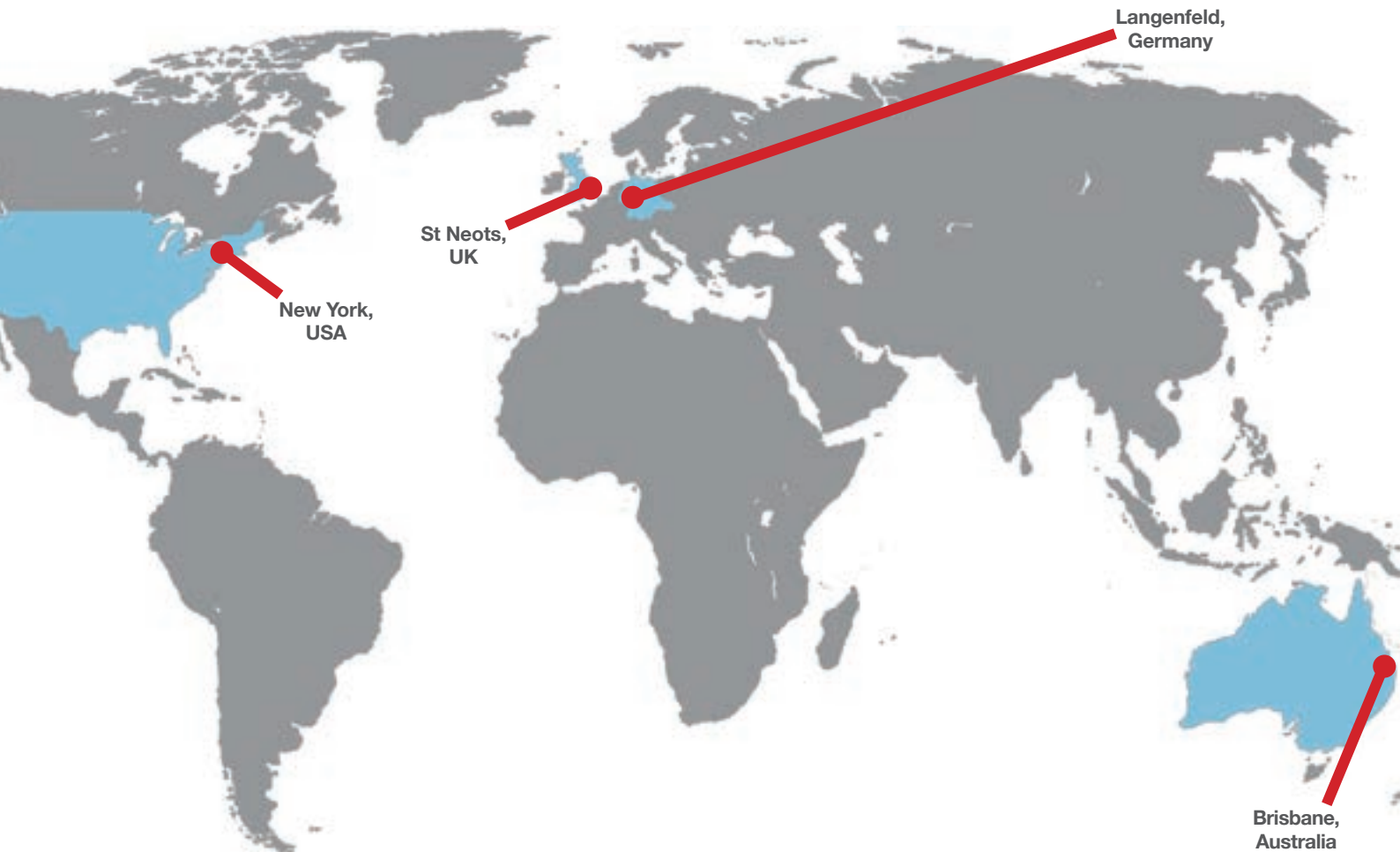
1 Hemphill Place Suite 104, Malta, NY 12020, USA
Tel: +1 (0)518 289 5817
Fax: +1 (0)518 289 5818
Toll Free in USA: (866) 934-6353
E-mail: sales@kinesis-usa.com
kinesis-usa.com

Kinesis Australia Pty Ltd

Unit 4, Jadsaw Court, 5-11 Daintree Drive
Redlands Business Park, Redland Bay, Qld 4165, Australia
Tel: +61 (0)7 3829 3996
Fax: +61 (0)7 3829 3997
E-mail: sales@kinesis-australia.com.au
kinesis-australia.com.au

Abimed Kinesis GmbH

Raiffeisenstrasse 3, 40764 Langenfeld, Germany
Tel: +49 (0)2173 89 05-0
Fax: +49 (0)2173 89 05-77
E-mail: sales@abimed.de
abimed.de



Ordering information see page 38



Kinesis acknowledges all trademarks and registered trademarks. All E & OE.

Our Company

Kinesis prides itself in the supply of quality chromatography and liquid handling consumables, instrumentation and service. Established in 1997, Kinesis has developed partnerships with leading manufacturers, and combined with our own brand of chromatography accessories, offer a comprehensive range of products and services for all LC and GC markets; these include pharmaceutical, clinical, academic, industrial and environmental customers.

The company has offices in four countries, UK, Germany, United States and Australia and a network of international distributors support all other countries. Being in direct and close contact with our customers and manufacturers alike, Kinesis understand the challenges and demands of modern analyses and continuously work to offer optimal solutions to meet customer needs. Kinesis firmly believes it is no longer sufficient to simply offer only competitive prices. Our philosophy is to add value to our customers by meeting the demands of your core business through our quality, expertise and support services.

Instrument Spares

Kinesis manufacture and distribute chromatography instrument spares and lamps under stringent ISO quality procedures, supplying to end-users, independent instrument service companies and through a worldwide network of distributors. In recognising the importance of maintaining the quality of the original product, Kinesis has formed partnerships with manufactures used by the majority of the leading instrument companies, supplying only the direct equivalent spares wherever possible.

As a company, Kinesis has developed strong relationships with many leading consumable and instrument manufacturers and this approach has led to primary or exclusive agreements with many of the leading brands including Upchurch Scientific and Rheodyne (now part of IDEX Health & Science), Hamamatsu and Heraeus.

Quality and the Environment

As an ISO 9001:2001 accredited company, Kinesis believes quality and service are paramount to our ongoing success and only companies who share the same ethos are used as supply partners. We monitor all our suppliers performance including returns, delivery and quality and this information is then collated and reviewed at our regular business meetings. In addition to our ISO 9001 accreditation Kinesis has attained the ISO 14001 standard for Environmental Management. We strongly believe that wherever possible we should embrace the recycling and energy reduction programmes and have geared our company to meet stringent environmental targets over the coming years.

The Kinesis Solution

Kinesis is able to provide a complete service to the chromatography customer with the added benefits of genuine quality replacement parts and expert maintenance and technical support. This, we believe, puts Kinesis in an unrivalled position to work with our customers and help achieve their own targets and goals.

Contents

■ Agilent	page 4	■ Shimadzu	page 18
■ Dionex	page 7	■ Thermo	page 21
■ Gilson	page 9	■ Waters	page 24
■ Merck Hitachi	page 12	■ Cross Reference.....	page 29
■ Jasco.....	page 14	■ Lamps.....	page 32
■ Perkin Elmer	page 16	■ IDEX Fittings.....	page 36

Pump Spares



■ **A302A**
**Inlet Solvent Filter 10um,
 1/8" OD Tubing**
 Model: 1050, 1090, 1100, 1200



■ **OC-AGI-101**
Outlet Cap
 Model: 1050, 1100, 1200
 OEM: 5062-2485



■ **CV-AGI-105**
Check Valve Cartridge
 Model: 1090
 OEM: 79835-67101



■ **PA-AGI-101**
Piston Assembly
 Model: 1050, 1100, 1200
 OEM: 5063-6586



■ **CV-AGI-206**
**Active Inlet Check Valve
 Cartridge (400 Bar)**
 Model: 1050, 1100, 1200
 OEM: 5062-8562



■ **PA-AGI-201**
Piston Assembly
 Model: 1090
 OEM: 3080-0672



■ **CV-AGI-207**
Check Valve Assembly, Outlet
 Model: 1050, 1100, 1200
 OEM: G1311-60012



■ **PS-AGI-102BK**
Piston Seal (Black)
 Model: 1050, 1100, 1200
 OEM: 5063-6589



■ **CV-AGI-208**
**Check Valve Assembly, Outlet
 (400 Bar) Binary Pump**
 Model: 1050, 1100, 1200
 OEM: G1312-60012



■ **SS-AGI-100**
Outlet Valve Sieves
 Model: 1050, 1100, 1202
 OEM: 5063-6505



■ **FR-AGI-100**
Frits PTFE PK/5
 Model: 1050, 1100, 1200
 OEM: 01018-22707



■ **WS-AGI-115**
Wash Seal
 Model: 1050, 1100, 1200
 OEM: 0905-1175



■ **GS-AGI-101**
Outlet Gold Seal
 Model: 1050, 1100, 1200
 OEM: 5001-3707



■ **WS-AGI-116**
**Wash Seal Kit
 (2 x Seals, 2 x Gaskets)**
 Model: 1050, 1100, 1200
 OEM: 01018-68722



■ **PS-AGI-102YW**
Piston Seal (Yellow)
 Model: 1050, 1100, 1200
 OEM: 0905-1420

Autosampler Spares



■ **NA-AGI-101**
Needle Assembly

Model: 1100, 1200
OEM: G1313-87201



■ **7750-027**
Stator Face Assembly

Model: 1100, 1200
OEM: 0100-1851



■ **NS-AGI-101**
Needle Seat Assembly

Model: 1100, 1200
OEM: G1313-87101



■ **IS-AGI-100**
Isolation Seal

Model: 1100, 1200
OEM: 0100-1852



■ **RS-AGI-1100**
Rotor Seal, Vespel, 2-Groove

Model: 1100, 1200
OEM: 0100-1853

Lamps



■ **LD-AGI-100**
Agilent 1050A D2 Lamp

Model: 79853A
OEM: 79853-60002



■ **LD-AGI-104LL**
Agilent 1100 VWD Long Life D2 Lamp

Model: G1314D/E/F
OEM: G1314-60101



■ **LD-AGI-100LL**
Agilent 1050A Long Life D2 Lamp

Model: 79853A
OEM: 79853-60002



■ **LD-AGI-105**
Agilent 1100 DAD 8453 D2 Lamp

Model: G1315A/B G1365A/B
OEM: 2140-0590



■ **LD-AGI-101**
Agilent 1050C 1050DAD 1090 D2 Lamp

Model: 79853C 79854A G1306A
OEM: 79883-60002



■ **LD-AGI-105LL**
Agilent 1100, 1200 DAD Long Life D2 Lamp

Model: G1315A/B G1365A/B
OEM: 5181-1530/2140-0813



■ **LD-AGI-104**
Agilent 1100 VWD, CE System D2 Lamp

Model: G1314A/B G1600A
OEM: G1314-60100



■ **LD-AGI-105LL**
Agilent 1100, 1200 DAD Longlife D2 Lamp

Model: G1315C/D G1365C/D
OEM: 2140-0820



■ **LX-AGI-101**
Agilent 1100 FLD, Xe Lamp

Model: G1321
OEM: 2140-0600

Maintenance Kits

■ MK-AGI-1100-D

Maintenance kit for Agilent 1100 system, with gradient LPG pump, DAD detector and autosampler:

Piston Assembly x 2, PA-AGI-101
Piston Seal (Black) x 4, PS-AGI-102BK
Wash Seal Kit (2 x Seals, 2 x Gaskets) x 1, WS-AGI-116
Outlet Cap (PK/4) x 1, OC-AGI-101
Outlet Gold Seal x 1, GS-AGI-101
Frits PTFE (PK/5) x 1, FR-AGI-100
Active Inlet Check Valve Cartridge (400bar) x 1, CV-AGI-206
Check Valve Assembly, Outlet x 1, CV-AGI-207
Outlet Valve Sieves (PK/10) x 1, SS-AGI-100
Rotor Seal, Vespel, 2-Groove x 1, RS-AGI-1100
Needle Assembly x 1, NA-AGI-101
Needle Seat Assembly x 1, NS-AGI-101
Agilent Finger Cap (PK/15) x 1
Stator Face Assembly x 1, 7750-027
Agilent 1100 DAD Long Life D2 Lamp x 1, LD-AGI-105LL
Model: 1100, 1200

■ MK-AGI-1100-P

Maintenance kit for Agilent 1100 system. Pump Only

Piston Assembly x 2, PA-AGI-101
Piston Seal (Black) x 4, PS-AGI-102BK
Wash Seal Kit (2 x Seals, 2 x Gaskets) x 1, WS-AGI-116
Outlet Cap (PK/4) x 1, OC-AGI-101
Outlet Gold Seal x 1, GS-AGI-101
Frits PTFE (PK/5) x 1, FR-AGI-100
Active Inlet Check Valve Cartridge (400bar) x 1, CV-AGI-206
Check Valve Assembly, Outlet x 1, CV-AGI-207
Outlet Valve Sieves (PK/10) x 1, SS-AGI-100

■ MK-AGI-1100-V

Maintenance kit for Agilent 1100 system, with gradient LPG pump, VWD detector and autosampler:

Piston Assembly x 2, PA-AGI-101
Piston Seal (Black) x 4, PS-AGI-102BK
Wash Seal Kit (2 x Seals, 2 x Gaskets) x 1, WS-AGI-116
Outlet Cap (PK/4) x 1, OC-AGI-101
Outlet Gold Seal x 1, GS-AGI-101
Frits PTFE (PK/5) x 1, FR-AGI-100
Active Inlet Check Valve Cartridge (400bar) x 1, CV-AGI-206
Check Valve Assembly, Outlet x 1, CV-AGI-207
Outlet Valve Sieves (PK/10) x 1, SS-AGI-100
Rotor Seal, Vespel, 2-Groove x 1, RS-AGI-1100
Needle Assembly x 1, NA-AGI-101
Needle Seat Assembly x 1, NS-AGI-101
Agilent Finger Cap (PK/15) x 1
Stator Face Assembly x 1, 7750-027
Agilent 1100 VWD Long Life D2 Lamp x 1, LD-AGI-104LL
Model: 1100, 1200

■ MK-AGI-1100-A

Maintenance kit for Agilent 1100 system, Autosampler Only

Rotor Seal, Vespel, 2-Groove x 1, RS-AGI-1100
Needle Assembly x 1, NA-AGI-101
Needle Seat Assembly x 1, NS-AGI-101
Agilent Finger Cap (PK/15) x 1
Stator Face Assembly x 1, 7750-027

Pump Spares



■ PA-DIO-101

Piston Assembly

Model: AGP, DQP, DRP, DXP, GPM-1, GPM-2, 2000, 4000
OEM: 036904



■ PS-GYN-102GY

Piston Seal

OEM: 300C, 300CP, M480, P580, P680 Analytical, Ultimate 3000
OME: N/A



■ PS-GYN-102YW

Piston Seal

300C, 300CP, M480, P580, P680 Analytical, Ultimate 3000
OEM: 2266.0304

■ PS-DIO-202 Piston Seal (o-ring)

Model: AGP, DQP, DRP, DXP, GPM-1, GPM-2, 2000, 4000
OEM: 035686

■ BS-DIO-114 Back Up Seal

Model: AGP, DQP, DRP, DXP, GPM-1, GPM-2, 2000, 4000
OEM: 036901

■ PS-DIO-302BK Piston Seal

Model: 300C, 300CP, M480, P580, P680 Analytical, Ultimate 3000
OEM: 6025.2011

■ CV-DIO-106 Check Valve Inlet

Model: AGP, DQP, DRP, DXP, GPM-1, GPM-2, 2000, 4000
OEM: 038273

■ PS-DIO-302YW Piston Seal

Model: 300C, 300CP, M480, P580, P680 Analytical, Ultimate 3000
OEM: 6025.2010A

■ CV-DIO-107 Check Valve Outlet (Old)

AGP, DQP, DRP, DXP, GPM-1, GPM-2, 2000, 4000
OEM: 03827

■ PS-DIO-402BK Piston Seal

Model: 300C, 300CP, M480, P580, P680 Analytical, Ultimate 3000
OEM: 6025.2011A

■ CV-DIO-207 Check Valve Outlet (New)

Model: AGP, DQP, DRP, DXP, GPM-1, GPM-2, 2000, 4000
OEM: 042761

■ PS-DIO-502BK Piston Seal

300C, 300CP, M480, P580, P680 Preparative
OEM: 2266.0804

■ PA-DIO-201 Piston Assembly

Model: 300C, 300CP, M480, P580, P680 Preparative
OEM: 2267.0802

■ PS-GYN-202 Piston Seal

Model: 300C, 300CP, M480, P580, P680 Analytical, Ultimate 3000
OEM: 6025.2010

■ PS-DIO-102 Piston Seal (Spring)

Model: AGP, DQP, DRP, DXP, GPM-1, GPM-2, 2000, 4000
OEM: 040859

■ RS-GYN-103 Ring Seal

Model: 300C, 300CP, M480, P580, P680 Analytical, Ultimate 3000
OEM: 2266.0081

Pump Spares



■ **BS-GYN-114**
Back Up Ring
 Model: 300C, 300CP, M480, P580,
 P680 Analytical, Ultimate 3000
 OEM: 5005.2004



■ **CV-GYN-108**
Check Valve Cartridge
 Model: 300C, 300CP, M480, P580,
 P680 Analytical, Ultimate 3000
 OEM: 5020.2300



■ **WS-GYN-115**
Wash Seal
 Model: 300C, 300CP, M480, P580,
 P680 Analytical, Ultimate 3000
 OEM: 2266.0304B



■ **PA-GYN-101**
Piston Assembly
 Model: 300C, 300CP, M480, P580,
 P680 Analytical, Ultimate 3000
 OEM: 2267.0032

■ **CV-GYN-106 Check Valve Inlet**
 Model: 300C, 300CP, M480, P580, P680 Analytical,
 Ultimate 3000
 OEM: 5020.2100A

■ **CV-GYN-107 Check Valve Outlet**
 Model: 300C, 300CP, M480, P580, P680 Analytical,
 Ultimate 3000
 OEM: 5020.2200

Autosampler Spares



■ **7010-999**
RheBuild Kit for 7010
Injection Valve
 Model: ASI-100

■ **NS-DIO-101 Needle Seat**
 Model: Miscellaneous
 OEM: 5805.1334

Lamps



■ **LD-DIO-102LL**
Deuterium Long Life UV Lamp
 Model: PDA-100, PDA-3000, AD-25
 OEM: 939016T



■ **LX-DIO-150S**
Xenon Lamp



■ **LD-DIO-104**
Deuterium UV Lamp
 Model: Ultimate UVD 3000 Nano LC
 OEM: 6073.2070



■ **LD-GYN-100LL**
Deuterium Long Life UV Lamp
 Model: UVD 320 340S 160 170S 170U
 OEM: 5,053.12



■ **LD-DIO-105LL**
Deuterium Long Life UV Lamp
 Model: Ultimate VWD 3000 3100 3400
 OEM: 6074.1110

■ **LD-DIO-108 Deuterium UV Lamp**
 Model: Durrum

■ **LD-DIO-100 Deuterium UV Lamp**
 Model: CES1 CZESYST 2001 VDM-2
 OEM: 40,651.00

Pump Spares



■ **AG-GIL-216**
Anti Extrusion Gasket
 Model: 30X SC & WSC 10ml Head
 OEM: E 50015



■ **CV-GIL-103T**
CV Cartridge Inlet (Titanium)
 Model: 30X SC & WSC
 5 10 25ml Head
 OEM: 3650170



■ **CV-GIL-104T**
CV Cartridge Outlet (Titanium)
 Model: 30X SC & WSC
 5 10 25ml Head
 OEM: 3650180



■ **CW-GIL-113**
CV Outlet Washer (Blank)
 Model: 30X SC & WSC
 5 10 25ml Head
 OEM: E 45329



■ **CW-GIL-213**
CV Outlet Washer (Frit)
 Model: 30X SC & WSC
 5 10 25ml Head
 OEM: E 45333



■ **MK-GIL-116**
Mixer Kit (New Style) 811

■ **AG-GIL-116 Anti Extrusion Gasket**
 Model: 30X SC & WSC 5ml Head
 OEM: E 50014

■ **AG-GIL-316 Anti Extrusion Gasket**
 Model: 30X SC & WSC 25ml Head
 OEM: E 50016



■ **PA-GIL-101**
Piston Assembly
 Model: 30X SC 5ml Head
 OEM: E 500008



■ **PA-GIL-201**
Piston Assembly
 Model: 30X SC 10ml Head
 OEM: E 50009



■ **PA-GIL-301**
Piston Assembly
 Model: 30X WSC 10ml Head
 OEM: E 50010



■ **PS-GIL-102BK**
Piston Seal (Black)
 Model: 30X SC 5ml Head
 OEM: 400112



■ **PS-GIL-102YW**
Piston Seal (Yellow)
 Model: 30X SC 5ml Head
 OEM: 400120

■ **CV-GIL-109 Inlet Check Valve Body**
 Model: 30X SC & WSC
 5 10 25ml Head
 OEM: E 50131

■ **CV-GIL-110 Outlet Check Valve Body**
 Model: 30X SC & WSC
 5 10 25ml Head
 OEM: E 50121

■ **PA-GIL-401 Piston Assembly**
 Model: 30X SC 25ml Head
 OEM: E 50011

Pump Spares



■ PS-GIL-202YW

Piston Seal (Yellow)

Model: 30X SC & WSC 10ml Head
OEM: 400121



■ PS-GIL-502YW

Piston Seal (Yellow)

Model: 30X SC 100ml Head
OEM: 400124



■ PS-GIL-302YW

Piston Seal (Yellow)

Model: 30X SC & WSC 25ml Head
OEM: 400122



■ RS-GIL-116

Pump Return Spring

Model: 5 10 25 SC & WSC

■ PS-GIL-202BK Piston Seal (Black)

Model: 30X SC & WSC 10ml Head
OEM: 400111

■ PS-GIL-602BK Piston Seal (Black)

Model: 321 322 H1
OEM: 38013222

■ PS-GIL-302BK Piston Seal (Black)

Model: 30X SC & WSC 25ml Head
OEM: 400117

■ PS-GIL-602YW Piston Seal (Yellow)

Model: 321 322 H1
OEM: 38013220

■ PS-GIL-402BK Piston Seal (Black)

Model: 30X SC 50ml Head
OEM: 400116

■ PS-GIL-702BK Piston Seal (Black)

Model: 321 322 H2
OEM: 38013224

■ PS-GIL-402YW Piston Seal (Yellow)

Model: 30X SC 50ml Head
OEM: 400123

■ PS-GIL-702YW Piston Seal (Yellow)

Model: 321 322 H2
OEM: 38013223

■ PS-GIL-502BK Piston Seal (Black)

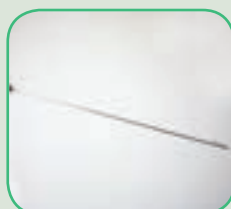
Model: 30X SC 100ml Head
OEM: 400103

Autosampler Spares



■ **NP-GIL-201**
Short Septum Piercing Needle
 - requires sleeve

Model: 231 232 A Series
 OEM: 27067131



■ **NP-GIL-202**
Long Septum Piercing Needle
 - requires sleeve

Model: XL
 OEM: 27067235



■ **NSL-GIL-202**
Long Needle Sleeve for
NP-GIL-202

Model: XL
 OEM: 27067236



■ **NP-GIL-102**
Needle - 1 piece

Model: XL
 OEM: 27067238

■ **NSS-GIL-201** **Short Needle Sleeve**
for NP-GIL- 201

Model: XL
 OEM: 27067132

■ **NNA-GIL-101** **Non Septum Piercing Needle**

Model: ASPEC
 OEM: 27067374



■ **IPS-GIL-002**
Injection Port Seal (New)
PK/3

OEM: 2707273 (PK5)
 or 27072755 (EA)



■ **NPA-GIL-102**
Septum Piercing Needle

Model: ASPEC
 OEM: 27067383



■ **IPS-GIL-003**
Injection Port Seal 1.5mm

Model: ASPEC
 OEM: 2954674



■ **7010-999**
RheBuild Kit for 7010
Injection Valve

Model: All

■ **IPS-GIL-001** **Injection Port Seal (old) PK/3**

OEM: 2707243

■ **NP-GIL-101** **Needle - 1 piece**

Model: 234
 OEM: 27067251

Lamps



■ **LD-GIL-101**
Deuterium UV Lamp

Model: 115/116/117/118/119/
 151/152/155/156
 OEM: 100326



■ **LX-GIL-150MO**
Xenon UV Lamp

Model: 122



■ **LD-GIL-105LL**
Deuterium Long Life UV Lamp

Model: 170 D.A.D.
 OEM: 2140-0590

Pump Spares



■ **CV-MH-105**
Check Valve Cartridge
 Model: 655 6000 6200 6200A
 OEM: ANO-0835



■ **CV-MH-207**
Check Valve Outlet
 Model: L2100, L2130, L7100, L7110
 OEM: 810-1005



■ **CV-MH-106**
Check Valve Inlet
 Model: 656 6000 6200 6200A
 OEM: 885-1330



■ **PA-MH-101**
Piston Assembly
 Model: 655 6000 6200 6200A L2100
 L2130 L7100 L7110
 OEM: 635-1021, 1801-1033



■ **CV-MH-107**
Check Valve Outlet
 Model: 657 6000 6200 6200A
 OEM: 885-1331



■ **PS-MH-102BK**
Piston Seal (Black)
 Model: 656 6000 6200 6200A L2100
 L2130 L7100 L7110
 OEM: 655-1080



■ **CV-MH-205**
Check Valve Cartridge
 Model: L2100, L2130, L7100, L7110
 OEM: N/A



■ **PS-MH-102CL**
Piston Seal (Clear)
 Model: 657 6000 6200 6200A L2100
 L2130 L7100 L7110
 OEM: N/A



■ **CV-MH-206**
Check Valve Inlet
 Model: L2100, L2130, L7100, L7110
 OEM: 810-1004

Autosampler Spares



■ **7010-999**
RheBuild Kit for 7010 Injection Valve
 Model: AS7200 AS7250
 OEM: ANO-0818



■ **DVS-MH-100**
Dilutor Valve Seal
 Model: AS7200 AS7250
 OEM: 810-3095



■ **007660**
Syringe 500ul
 Model: AS7200 AS7250

Lamps



■ LD-MEH-100

Deuterium UV Lamp

Model: L & U Series (Not L2400 L2455
L7450 L7455)
OEM: 890-2430



■ LT-MEH-100

Visible Lamp

Model: U Series



■ LD-MEH-100Z

Deuterium UV Lamp

Model: LaChrom L2400 L2455 L7450
L7455 DAD
OEM: 890-2431



■ LX-MEH-152H

Xenon UV Lamp

Model: Fluorescence Detector

■ LD-MEH-101 Deuterium UV Lamp

Model: 100-X, 124
OEM: 982-1035

■ LD-MEH-103 Deuterium UV Lamp

Model: U1800, U2800 U2810
OEM: 122-2300

■ LD-MEH-102 Deuterium UV Lamp

Model: 101, 102, 111

■ LD-MEH-104 Deuterium UV Lamp

Model: 150 to 655, 2000, 3200
OEM: 885-1000

Pump Spares



■ CV-JAS-106

Check Valve Inlet (Isocratic)

Model: PU-880, PU-980, PU-1580,
2080 2086 2089 BIP 1
OEM: 6560-405A/6778-H109A



■ CV-JAS-107

Check Valve Outlet

Model: PU-880, PU-980, PU-1580,
2080 2086 2089 BIP 1
OEM: 6560-404A/6778-H110A



■ PS-JAS-102YW

Piston Seal (Yellow)

Model: PU-880, PU-980, PU-1580,
2080 2086 2089 BIP 1
OEM: 6560-H148A

■ CV-JAS-105 Check Valve Cartridge

Model: PU-880, PU-980, PU-1580, 2080 2086 2089 BIP 1
OEM: N/A

■ CV-JAS-206 Check Valve Inlet (Gradient)

Model: PU-880, PU-980, PU-1580, 2080 2086 2089 BIP 1
OEM: 406 JA

■ CV-JAS-305 Inlet / Outlet Check Valve Cartridge

Model: PU-1580 Semi-Microflow
OEM: N/A



■ PA-JAS-101

Piston Assembly

Model: PU-880, PU-980, PU-1580,
2080 2086 2089 BIP 1
OEM: 2305-0005A



■ PA-JAS-201

Piston Assembly

Model: PU-1580 Semi-Microflow
OEM: 2305-0013A

■ CV-JAS-306 Inlet Check Valve Assembly Cartridge

Model: PU-1580 Semi-Microflow
OEM: 6778-23A

■ CV-JAS-307

Outlet Check Valve Assembly Cartridge

Model: EPU-1580 Semi-Microflow
OEM: 6778-24A

■ PS-JAS-102BK Piston Seal (Black)

Model: PU-880, PU-980, PU-1580, 2080 2086 2089 BIP 1
OEM: N/A

■ PS-JAS-202GY Piston Seal (Grey)

Model: PU-1580 Semi-Microflow
OEM: 6778-26A

■ PS-JAS-202YW Piston Seal (Yellow)

Model: PU-1580 Semi-Microflow
OEM: N/A

Autosampler Spares



■ **7010-999**
RheBuild Kit for 7010
Injection Valve

Model: AS Series

■ **006995 Syringe PE Autosampler Syringe 250ul**
 Model: AS Series

Lamps



■ **LD-JAS-101LL**
Deuterium UV Long Life Lamp

Model: 970 975 (B & C) 1570 1575
 2070 2075
 OEM: 5330-0091



■ **LX-JAS-274**
Xenon UV Lamp

Model: 920 921 1520 2020



■ **LX-JAS-150MO**
Xenon UV Lamp

Model: 820 821

■ **LD-JAS-102LL Deuterium UV Long Life Lamp**

Model: 530, 550, 560 570

■ **LD-JAS-103LL Deuterium UV Long Life Lamp**

Model: 975 (A series)
 OEM: 5330-0092

■ **LD-JAS-100 Deuterium UV Lamp**

Model: 870 875

■ **LD-JAS-100LL Deuterium UV Long Life Lamp**

Model: 870 875
 OEM: 5330-0097

Pump Spares



■ BS-PE-114

Backing Ring HP

Model: 200 Series, 1, 2, 3, 3B, 4, 10.
250, 400, 410, 620, INT 4000
OEM: 0254-2076



■ BS-PE-214

PTFE o-ring

Model: 200 Series, 1, 2, 3, 3B, 4, 10.
250, 400, 410, 620, INT 4000
OEM: 09902128



■ CV-PE-106

Check Valve Inlet

Model: 200 Series, 1, 2, 3, 3B, 4, 10.
250, 400, 410, 620, INT 4000
OEM: 02540177



■ CV-PE-107

Check Valve Outlet

Model: 200 Series, 1, 2, 3, 3B, 4, 10.
250, 400, 410, 620, INT 4000
OEM: 02540197



■ GB-PE-116

Guide Bush L.P.

Model: 200 Series, 1, 2, 3, 3B, 4, 10.
250, 400, 410, 620, INT 4000
OEM: 02542313



■ GB-PE-216

Guide Bush L.P.

Series 200 Micro
OEM: N2915006



■ PA-PE-101

Piston Assembly H.P.

200 Series, 1, 2, 3, 3B, 4, 10. 250,
400, 410, 620, INT 4000
OEM: N2600124



■ PA-PE-201

Piston Assembly L.P.

Model: 200 Series, 1, 2, 3, 3B, 4, 10.
250, 400, 410, 620, INT 4000
OEM: N2600104



■ PA-PE-301

Piston Assembly H.P.

Model: Series 200 Micro
OEM: N2910511



■ PA-PE-401

Piston Assembly L.P.

Model: Series 200 Micro
OEM: N2910512



■ PS-PE-102YW

Piston Seal H.P. (Yellow)

Model: 200 Series, 1, 2, 3, 3B, 4, 10.
250, 400, 410, 620, INT 4000.
OEM: 0990-7324



■ PS-PE-202BK

Piston seal L.P. (Black)

Model: 200 Series, 1, 2, 3, 3B, 4, 10.
250, 400, 410, 620, INT 4000
OEM: 0990-7330



■ PS-PE-202YW

Piston seal L.P. (Yellow)

Model: 200 Series, 1, 2, 3, 3B, 4, 10.
250, 400, 410, 620, INT 4000
OEM: 0990-7339



■ PS-PE-302YW

Piston seal H.P. Micro (Yellow)

Model: Series 200 Micro
OEM: 09923367

Pump Spares



■ **PS-PE-402BK**
Piston seal L.P. Micro (Black)

Model: Series 200 Micro
OEM: 09923366

■ **CW-PE-216 Check Valve Washer**

Model: 200 Series, 1, 2, 3, 3B, 4, 10, 250, 400, 410, 620, INT 4000
OEM: 02452150

■ **PS-PE-402YW Piston Seal L.P. (Yellow)**

Model: Series 200 Micro
OEM: N/A

Autosampler Spares



■ **7010-999**
RheBuild Kit for 7010 Injection Valve

Model: 200 Series

■ **NA-PE-101 Injector Needle Assembly**

Model: 200 Series
OEM: N2930023

■ **006995 Autosampler Syringe 250ul**

Model: 200 Series
OEM: 09923270

Lamps



■ **LD-PER-100**
Deuterium UV Lamp

Model: Series 200
OEM: N2920149



■ **LD-PER-160**
Deuterium UV Lamp

Model: Lambda 2 to 45 800 900 Bio, 55X Series LC480
OEM: B016-0917



■ **LT-PER-160**
Halogen Visible Lamp

Model: Lambda 2 to 45 800 900 Bio, 55X series



■ **LX-PER150MO**
Xenon UV Lamp

Model: 203 204 MPF2A MPF3 MPF4 650

■ **LD-PER-102 Deuterium UV Lamp**

Model: Series 200 DAD
OEM: N2922046

■ **LD-PER-105 Deuterium UV Lamp**

Model: LC295
OEM: 0271 2266

■ **LD-PER-103 Deuterium UV Lamp**

Model: LC55, 65, 75 85 95 135 141 235 241
Lambda 1 3, Integral
OEM: N2351285

■ **LD-PER-162 Deuterium UV Lamp**

Model: 1100, 2100, 4100
OEM: B0148615

■ **LD-PER-104 Deuterium UV Lamp**

Model: LC90 240 290 481
OEM: 0271 2224

Pump Spares



■ **CV-SHI-105**
Check Valve Cartridge Inlet/Outlet
 Model: 3, 4, 5, 6, 8, 10AS, (10AT ATVP Prominence LC-20AT Inlet Only)
 OEM: N/A



■ **CV-SHI-106**
Check Valve Inlet Assembly
 Model: 3 4 5 6 10AS
 OEM: 228-12353-91



■ **CV-SHI-107**
Check Valve Outlet Assembly
 Model: 3 4 5 6 8 10AS
 OEM: 228-09054-93



■ **CV-SHI-305**
Check Valve Cartridge Inlet/Outlet
 Model: 9 10AD ADVP 600 2010, Prominence LC-20AD/B (10AT ATVP Prominence LC-20AT Outlet Only)
 OEM: N/A



■ **CV-SHI-306**
Check Valve Inlet Assembly
 Model: LC-9, LC-10AD, LC-600
 OEM: 228-33492-91



■ **CV-SHI-307**
Check Valve Outlet Assembly
 Model: 9 600 10AD, 10ADVP, 10AT, 10ATVP, 2010, 20AD Prominence LC-20AT
 OEM: 228-34976-91



■ **CV-SHI-506**
Check Valve Inlet Assembly
 Model: LC10AT 10ATVP Prominence LC-20AT
 OEM: 288-32166-91



■ **CV-SHI-606**
Check Valve Inlet Assembly
 Model: LC-10 ADVP, LCMS 2010A, LC-Prominence LC-20AD/B
 OEM: 228-39093-92



■ **PA-SHI-301**
Piston Assembly
 LC-9, LC-10AD, LC-600
 OEM: 228-18523-91



■ **PA-SHI-401**
Piston Assembly
 Model: LC-10AS
 OEM: 228-17019-93



■ **PA-SHI-601**
Piston Assembly
 Model: LC-10 ADVP, LCMS 2010A, Prominence LC-20AD/B
 OEM: 228-35601



■ **PA-SHI-701**
Piston Assembly (Ceramic)
 Model: LC-10 ATVP, Prominence LC-20AT
 OEM: 228-35009-92



■ **PS-SHI-402YW**
Piston Seal (Yellow)
 Model: LC-3, 4, 5, 6, 6A, 10AS, 10AT, 10ATVP, Prominence LC-20AT
 OEM: 228-21975-00



■ **PS-SHI-602BK**
Piston Seal (Black)
 Model: 600, 9, 10AD, 10ADVP, 2010A, Prominence LC-20AD/B
 OEM: 228-35146-00

■ **PS-SHI-602YW Piston Seal (Yellow)**
 Model: 600, 9, 10AD, 10ADVP, 2010A, Prominence LC-20AD/B
 OEM: 228-32628-00

■ **PA-SHI-801 Piston Assembly (Sapphire)**
 Model: LC-10 ATVP, Prominence LC-20AT
 OEM: 228-35009-91

Pump Spares



■ PS-SHI-802BK

Piston Seal (Black)

Model: LC-3, 4, 5, 6, 6A, 10AS, 10AT,
10ATVP, Prominence LC-20AT
OEM: 228-35145-00



■ WS-SHI-615

Wash Seal (White)

Model: LC-10AS 10AT LC-10 ATVP,
Prominence LC-20AT
OEM: 228-28499-00

Autosampler Spares



■ RS-SHI-101

Rotor Seal

Model: SIL-10A, SIL-10AXL,
SIL-10AI
OEM: 228-21217-91



■ NS-SHI-101

Needle Seal

Model: SIL-10AXL, SIL-10ADvp,
LC-2010
OEM: 228-33355



■ RS-SHI-102

Rotor Seal

Model: SIL-10ADvp
OEM: 228-21217-97



■ PA-SHI-901

Piston Assembly

Model: SIL-10ADvp, SIL-20A/AC,
SIL-HT
OEM: 228-35010-91



■ ST-SHI-101

Stator Assembly

Model: SIL-10A, SIL-10AXL,
SIL-10AI
OEM: 228-21220-91



■ PS-SHI-802BK

Plunger Seal (Black)

Model: SIL-10ADvp, SIL-20A/AC,
SIL-HT
OEM: 228-35145-00



■ SY-SHI-101

Syringe 500ul

Model: SIL-10A, SIL-10AXL,
SIL-10AI
OEM: 228-25237-04

Lamps



■ **LD-SHI-101LL**
Deuterium UV Long Life Lamp
Model: SPD-10A, AVP, AV, AVVP,
M10AVP, 20A, 20AV
OEM: 228-34016-02



■ **LD-SHI-102**
Deuterium UV Lamp
Model: Spectrophotometer
OEM: 062-65055-05



■ **LD-SHI-102LL**
Deuterium UV Long Life Lamp
Model: Spectrophotometer
OEM: 062-65055-05



■ **LD-SHI-103LL**
Deuterium UV Long Life Lamp
Model: LC2010
OEM: 228-37401-00

■ **LD-SHI-100LL Deuterium UV Long Life Lamp**
Model: LC4A, LC6A, SPD2A, SPD6A SPD6AV SP4
OEM: 062-65056-03

■ **LD-SHI-104 Deuterium UV Lamp**
Model: SPD-M10A, M10AV
OEM: 670-14604-00

■ **LD-SHI-104LL Deuterium UV Long Life Lamp**
Model: SPD-M10A, M10AV
OEM: 670-14604-00



■ **LX-SHI-150MO**
Xenon UV Lamp
Model: RF1501.5301 5000
OEM: 200-81500-01



■ **LX-SHI-150S**
Xenon UV Lamp
Model: RF540 RF535 RF551
RF500 RF10A
OEM: RF10AXL



■ **LX-SHI-75XE**
Xenon UV Lamp
Model: RF530 RF510

■ **LT-SHI-101 Tungsten Halogen Visible Lamp**
Model: SPD-10AV, AVP, AVVP, 20AV
OEM: 670-14602-00

■ **LT-SHI-102 Tungsten Halogen Visible Lamp**
Model: Spectrophotometer

■ **LT-SHI-104 Tungsten Halogen Visible Lamp**
Model: M10AVP
OEM: 228-34410-91

■ **LT-SHI-105 Tungsten Halogen Visible Lamp**
Model: RID 6A, RID 10A
OEM: 228-32445-91

Pump Spares



■ CV-TSP-105

Check Valve Cartridge

Model: SP8800, 8810, P1000, P2000, P4000, ISOCHROM
OEM: N/A



■ CV-TSP-106

Check Valve Inlet

Model: SP8800, 8810, P1000, P2000, P4000, ISOCHROM
OEM: A3495-010



■ CV-TSP-107

Check Valve Outlet

Model: SP8800, 8810, P1000, P2000, P4000, ISOCHROM
OEM: A3490-010



■ CV-TSP-108

Check Valve Transducer

Model: SP8800, 8810, P1000, P2000, P4000, ISOCHROM
OEM: A3990-010



■ CV-TSP-505

Check Valve Cartridge Inlet

Model: Surveyor LC
OEM: N/A



■ CV-TSP-506

Check Valve Assembly Inlet

Model: Surveyor LC
OEM: 00950-30026



■ PA-TSP-101

Piston Assembly

Model: SP8800, 8810, P1000, P2000, P4000, ISOCHROM
OEM: A3102-010



■ PA-TSP-401

Piston Assembly (Sapphire)

Model: Surveyor LC
OEM: 00950-30020S

■ BF-TSP-100 Back Flush Kit

Model: SP8800, 8810, P1000, P2000, P4000, ISOCHROM
OEM: A4114-010

■ CV-TSP-507 Check Valve Assembly Outlet

Model: Surveyor LC
OEM: 00950-30021

■ CV-TSP-306 Check Valve Inlet

Model: SP8800, 8810, P1000, P2000, P4000, ISOCHROM Inert
OEM: A3893-010

■ IF-TSP-100 Inlet Reservoir Filter

Model: SP8800, 8810, P1000, P2000, P4000, ISOCHROM
OEM: A4929-010

■ CV-TSP-308 Check Valve Transducer

Model: SP8800, 8810, P1000, P2000, P4000, ISOCHROM Inert
OEM: A3894-010

■ PA-TSP-301 Piston Assembly (Ceramic)

Model: Surveyor LC
OEM: 00950-30020Z

■ CV-TSP-405 Check Valve Cartridge

Model: Surveyor MS
OEM: 00110-05110

■ PA-TSP-501 Piston Assembly (Ceramic)

Model: Surveyor MS
OEM: 00201-11324

■ CV-TSP-504 Check Valve Cartridge Outlet

Model: Surveyor LC
OEM: N/A

■ PG-TSP-101 Piston Guide Bush

Model: SP8800, 8810, P1000, P2000, P4000, ISOCHROM
OEM: A 5018-010

Pump Spares



■ PS-TSP-102BK

Piston Seal (Black)

Model: SP8800, 8810, P1000, P2000, P4000, ISOCHROM
OEM: A2962-020



■ PS-TSP-102YW

Piston Seal (Yellow)

Model: SP8800, 8810, P1000, P2000, P4000, ISOCHROM
OEM: A2962-010



■ PS-TSP-502BK

Piston Seal (Black)

Model: Surveyor LC
OEM: 00950-30004B



■ PS-TSP-502YW

Piston Seal (Yellow)

Model: Surveyor LC
OEM: 00950-30004Y



■ PS-TSP-602YW

Piston Seal (Yellow)

Model: SP8800, 8810, P1000, P2000, P4000, ISOCHROM Inert
OEM: A3207-010

■ PS-TSP-102CL Piston Seal (Clear)

Model: SP8800, 8810, P1000, P2000, P4000, ISOCHROM
OEM: A2962-050

■ PS-TSP-302CL Piston Seal (Clear)

Model: Surveyor MS
OEM: 00107-18111

■ PS-TSP-402BK Piston Seal (Black)

Model: Surveyor MS
OEM: 00107-18110



■ RS-TSP-101

Return Spring

Model: SP8800, 8810, P1000, P2000, P4000, ISOCHROM
OEM: A4448-010



■ WA-TSP-116

Washer Seal Housing (Old)

Model: SP8800, 8810, P1000, P2000, P4000, ISOCHROM
OEM: A2973-010



■ WA-TSP-117

Washer Seal Housing (New)

Model: SP8800, 8810, P1000, P2000, P4000, ISOCHROM
OEM: A4848-010



■ WS-TSP-115

Wash Seal (White)

Model: SP8800, 8810, P1000, P2000, P4000, ISOCHROM
OEM: A2963-010

■ PS-TSP-602BK Piston Seal (Black)

Model: SP8800, 8810, P1000, P2000, P4000, ISOCHROM Inert
OEM: N/A

■ PS-TSP-602CL Piston Seal (Clear)

Model: SP8800, 8810, P1000, P2000, P4000, ISOCHROM Inert
OEM: N/A

■ PVS-TSP-100 Purge Valve Stem

Model: SP8800, 8810, P1000, P2000, P4000, ISOCHROM
OEM: A4412-010

■ WS-TSP-215 Wash Seal (White)

Model: Surveyor LC
OEM: 00950-30025

Autosample Spares



■ 006660

Syringe 250ul

Model: AS100, 300, 1000, 3000, 3500,
8780, 8875, 8880
OEM: A3588-020



■ SY-TSP-105

Syringe 500ul

Model: 8800
OEM: 3301-0100



■ 007680

Syringe 500ul

Model: AS100, 300, 1000, 3000, 3500,
8780, 8875, 8880



■ 7010-999

Rhebuild Kit for 7010 Injection Valve

Model: S100, 300, 1000, 3000, 3500,
8780, 8875, 8880 8800
OEM: 2508-0360

Lamps



■ LD-TSP-102

Deuterium UV Lamp

Model: UV100, 1000, 2000, 3000
Focus Spectrachrom
OEM: 9551-0023

■ LD-TSP-107 Deuterium UV Lamp

Model: Spectrofocus

■ LD-TSP-150 Deuterium UV Lamp

Model: LC871

■ LD-TSP-101 Deuterium UV Lamp

Model: SP8200 8400 8480 8430 8440 8450 8490
OEM: 3302-9540

■ LT-TSP-102 Tungsten Halogen Visible Lamp

Model: UV100, 1000, 2000, 3000 Focus Spectrachrom
OEM: 9551-0022

■ LD-TSP-100 Deuterium UV Lamp

Model: 3100

■ LT-TSP-106 Tungsten Halogen Visible Lamp

Model: UV 6000 DAD Surveyor
OEM: 803247

■ LD-TSP-103 Deuterium UV Lamp

Model: SA6510, SP770, SP970, SP8480XR, SP8773XR

■ LX-TSP-101 Xenon UV Lamp

Model: FL2000, FL3000, LC304
OEM: 9551-0144

■ LD-TSP-106 Deuterium UV Lamp

Model: UV 6000 DAD Surveyor
OEM: 108052

Pump Spares



■ **CV-WAT-205**
Check Valve Cartridge
 Model: M45, M501 M510 M515
 M590 M600 M610 M6000 1515
 1525 (100ul head)
 OEM: 700000254



■ **CV-WAT-707**
Check Valve Outlet Assembly
 Model: M45, M501 M510 M515 M590
 M600 M610 M6000 1525 (100ul head)
 OEM: WAT025216



■ **CV-WAT-306**
Check Valve Inlet Assembly
 Model: LC Module 1, M45, M501
 M510 M515 M590 M600 M610
 M6000 (100ul head)
 OEM: WAT033679



■ **FS-WAT-915**
Face Seal
 Model: Alliance 2690, 2695, 2790,
 2795
 OEM: WAT270163



■ **CV-WAT-307**
**Check Valve Outlet Assembly -
 Actuator Style**
 Model: M45, M501 M510 M515 M590
 M600 M610 M6000 (100ul head)
 OEM: WAT025028



■ **PA-WAT-101**
Piston Assembly
 Model: M45, M501 (100ul head)
 OEM: WAT026524



■ **CV-WAT-506**
**Check Valve Inlet Waters
 Extended Flow**
 Model: LC Module 1, M510EF, M590EF,
 M600EF, M610EF, M6000EF 1525 (225ul head)
 OEM: WAT060307



■ **PA-WAT-301**
Piston Assembly
 Model: M510, M590, M600, M610,
 M6000 (100ul head)
 OEM: WAT025656



■ **CV-WAT-507**
**Check Valve Outlet
 Extended Flow**
 Model: LC Module 1, M510EF, M590EF,
 M600EF, M610EF, M6000EF (225ul head)
 OEM: WAT033326



■ **PA-WAT-501**
Piston Assembly Extended Flow
 Model: M510EF, M590EF, M600EF,
 M610EF, M6000EF 1525
 (225ul head)
 OEM: WAT060304



■ **CV-WAT-608**
Check Valve Cartridge
 Model: Alliance 2690, 2695,
 2790, 2795
 OEM: WAT270941



■ **PA-WAT-601**
Piston Assembly
 Model: Alliance 2690, 2695,
 2790, 2795
 OEM: WAT270959



■ **CV-WAT-609**
Check Valve Cartridge
 Model: 616
 OEM: WAT024960



■ **PA-WAT-701**
Piston Assembly
 Model: M515 1515 1525 (100ul head)
 OEM: WAT207069

■ **CV-WAT-1005 Check Valve Cartridge**

Model: 1525 Micro (50ul head)
 OEM: 700002275

■ **CV-WAT-610 Check Valve Cartridge**

Model: 625, 626 (50ul head)
 OEM: WAT024120

Pump Spares



■ PA-WAT-801

Piston Assembly

Model: 1525 Micro (50ul head)
OEM: WAT030547



■ PS-WAT-602YW

Piston Seal (Yellow)

Model: Alliance 2690, 2695,
2790, 2795
OEM: WAT270938



■ PA-WAT-901

Piston Assembly

Model: 616, 625, 626 (50ul head)
OEM: WAT031788



■ PS-WAT-802

Piston Seal Kit

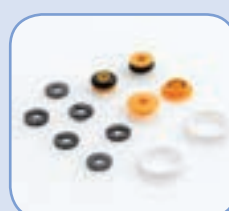
Model: 616 1525 Micro (50ul head)
OEM: WAT034515



■ PS-WAT-102BK

Piston Seal (Black)

Model: M45, M501 M510 M515 M590
M600 M610 M6000 1515 1525 (100ul
head)
OEM: WAT026613



■ PS-WAT-902

Piston Seal Kit

Model: 616, 625, 626
OEM: WAT031790



■ PS-WAT-302CL

Piston Seal (Clear)

Model: M45, M501 M510 M515 M590
M600 M610 M6000 1515 1525 (100ul
head)
OEM: WAT022934



■ WS-WAT-615

Wash Seal Plunger Seal

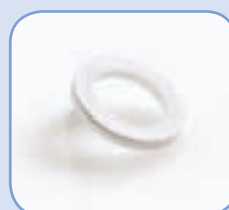
Model: Alliance 2690, 2695,
2790, 2795
OEM: WAT270160



■ PS-WAT-302YW

Piston Seal (Yellow)

Model: M45, M501 M510 M515 M590
M600 M610 M6000 1515 1525 (100ul
head)
OEM: N/A



■ WS-WAT-715

Wash Seal Face Seal

Model: Alliance 2690, 2695,
2790, 2795
OEM: WAT271017



■ PS-WAT-502

Piston Seal Extended Flow (Black)

Model: M510EF, M590EF, M600EF,
M610EF, M6000EF 1525 (225ul head)
OEM: WAT026644



■ WS-WAT-815

Wash Seal Tube Seal

Model: Alliance 2690, 2695,
2790, 2795
OEM: WAT270668



■ PS-WAT-502YW

Piston Seal Extended Flow (Yellow)

Model: M510EF, M590EF, M600EF,
M610EF, M6000EF 1525 (225ul head)
OEM: N/A



■ FI-WAT-101-5

Pre-column Filter Insert 2um PK/5

Model: Alliance 2690, 2695,
2790, 2795
OEM: WAT005139



■ PS-WAT-602BK

Piston Seal (Black)

Model: Alliance 2690, 2695,
2790, 2795
OEM: WAT271066

Pump Spares



■ WS-WAT-915

Wash Seal PK/2

Model: Acquity, Nano Acquity
OEM: 700002598



■ PA-WAT-911

Piston Assembly PK/2

Model: Acquity, Nano Acquity
OEM: 700002600



■ PS-WAT-912

Head Plunger Seal PK/2

Model: Acquity, Nano Acquity
OEM: 700002599



■ CV-WAT-915

UPLC Primary Check Valve PK/2

Model: Acquity, Nano Acquity
OEM: 700002596

Autosampler Spares



■ 006690

250µL Waters Syringe Gas Tight Screw Thread

Model: 715 717 2690 2695
OEM: WAT073109



■ RK-WAT-424

HPMV 1&2 ReBuild Kit with Spool

Model: 715 717 2690 2695
OEM: WAT045424



■ SP-WAT-559

Seal Pack Assembly with Needle

Model: 715 717
OEM: WAT045559



■ SP-WAT-791

Seal Pack Assembly with Needle

Model: 2690 2695
OEM: 700002791



■ RK-WAT-019

Seal Pack ReBuild Kit

Model: 2690 2695
OEM: WAT271019

■ 003990 25µL Waters Syringe Gas Tight Screw Thread

Model: 715 717
OEM: 2690 2695

Lamps



■ LD-WAT-100

Deuterium UV Lamp

Model: 480LC 481LC 481
Lambda Max
OEM: WAT099499



■ LX-WAT-150MO

Xenon UV Lamp

Model: 470 474
OEM: WAT052665



■ LD-WAT-101

Deuterium UV Lamp

Model: 484
OEM: WAT080357



■ QL-WAT-687

Quartz Lens

Model: 486
OEM: WAT080687



■ LD-WAT-102

Deuterium UV Lamp

Model: 486
OEM: WAT080678



■ CW-WAT-244

Optics Cover window

Model: 486
OEM: WAT080244



■ LD-WAT-104LL

Deuterium Long Life UV Lamp

Model: 996, 2996 PDA
OEM: WAT052586



■ HW-WAT-341

Lamp Housing Window

Model: 2487 2488
OEM: WAS081341



■ LD-WAT-105LL

Deuterium Long Life UV Lamp

Model: 2487 2488
OEM: WAS081142

■ LD-WAT-134 Deuterium UV Lamp

Model: 990 991 994
OEM: WAT021516

Maintenance Kits

■ MK-WAT-717

Waters 717 Autosampler Performance Maintenance Kit

Seal Pack x 1, SP-WAT-559
250ul Syringe x 1, 006690
Filter Foam 24Ppi, 2.3 x 11.5"
Filter Foam 24Ppi, 2 x 7"
Model: 717
OEM: WAT052669

■ MK-WAT-510

Waters 510 Pump Performance Maintenance Kit

Actuator Outlet ReBuild Kit x1
Check Valve Cartridge x 2, CV-WAT-205
Piston Seal x 2, PS-WAT-302CL
Solvent Reservoir Filter 10um x 1
Piston Assembly x 2, PA-WAT-301
Reference Valve ReBuild Kit x 1
Inlet Manifold Kit x 1
Model: 510
OEM: WAT052670

■ MK-WAT-515

Waters 515 Pump Performance Maintenance Kit

Check Valve Cartridge x 4, CV-WAT-205
Piston Seal x 2, PS-WAT-302CL
Solvent Reservoir Filter 10um x 1
Piston Assembly x 2, PA-WAT-701
Sparge Diffuser x 1
Model: 515
OEM: WAT052587

■ MK-WAT-1515

Waters 1515 Pump Performance Maintenance Kit

Check Valve Cartridge x 4, CV-WAT-205
Piston Seal x 2, PS-WAT-302C
Solvent Reservoir Filter 10um x 1
Piston Assembly x 2, PA-WAT-701
Reference Valve RehBuild Kit x 1
Model: 1515
OEM: 201000113

■ MK-WAT-1525

Waters 1525 Pump Performance Maintenance Kit

Check Valve Cartridge x 8, CV-WAT-205
Piston Seal x 4, PS-WAT-302CL
Solvent Reservoir Filter 10um x 2
Piston Assembly x 4, PA-WAT-701
Reference Valve RehBuild Kit x 1
Model: 1525
OEM: 201000114

■ MK-WAT-600

Waters 600 610 Pump Performance Maintenance Kit

Check Valve Cartridge x 4, CV-WAT-205
Piston Seal x 2, PS-WAT-302CL
Solvent Reservoir Filter 10um x 4
Piston Assembly x 2, PA-WAT-301
Reference Valve ReBuild Kit x 1
Sparge Diffuser x 4
Inlet Manifold Kit x 1
Model: 600 610
OEM: WAT052675

■ MK-WAT-269-SM

Waters Alliance Solvent Manager Performance Maintenance Kit

Piston Assembly x 2, PA-WAT-601
Wash Seal Plunger Seal x 2, WS-WAT-615
Piston Seal, Yellow x 2, PS-WAT-602YW
Wash Seal Tube Seal x 4, WS-WAT-815
Precolumn Filter Insert 2um x 1, FI-WAT-101
Face Seal x 4, FS-WAT-915
Check Valve Cartridge x 2, CV-WAT-608
Wash Seal Face Seal x 2, WS-WAT-715
Model: 2690 2695
OEM: 700004073

■ MK-WAT-269

Waters Alliance Performance Maintenance Kit with Seal Pack

Piston Assembly x 2, PA-WAT-601
Wash Seal Plunger Seal x 2, WS-WAT-615
Piston Seal, Yellow x 2, PS-WAT-602YW
Wash Seal Tube Seal x 4, WS-WAT-815
Pre-column Filter Insert 2um x 1, FI-WAT-101
Face Seal x 4, FS-WAT-915
Check Valve Cartridge x 2, CV-WAT-608
Wash Seal Face Seal x 2, WS-WAT-715
Seal Pack Assembly With Needle x 1, SP-WAT-791
Battery x 1
Sparge Diffuser x 1
250ul Waters Syringe x 1, 006690
Solvent Reservoir Filter 10um x 4
Model: 2690 2695
OEM: WAT270944

Cross Reference

■ Agilent

OEM Part No.	Kinesis Part No.
79835-25211	CV-AGI-108
5062-8562	CV-AGI-206
G1311-60012	CV-AGI-207
G1312-60012	CV-AGI-208
01018-22707	FR-AGI-100
5001-3707	GS-AGI-101
5062-2485	OC-AGI-101
5063-6586	PA-AGI-101
3080-0672	PA-AGI-201
5063-6589	PS-AGI-102BK
0905-1420	PS-AGI-102YW
5063-6505	SS-AGI-100
0905-1175	WS-AGI-115
01018-68722	WS-AGI-116
G1313-87201	NA-AGI-101
G1313-87101	NS-AGI-101
0100-1853	RS-AGI-1100
0100-1851	7750-027
0100-1852	IS-AGI-100
79853-60002	LD-AGI-100
79853-60002	LD-AGI-100LL
79883-60002	LD-AGI-101
G1314-60100	LD-AGI-104
G1314-60101	LD-AGI-104LL
2140-0590	LD-AGI-105
5181-1530/2140-0813	LD-AGI-105LL
2140-0820	LD-AGI-105LL
2140-0549	LX-AGI-100
2140-0600	LX-AGI-101

■ Dionex

OEM Part No.	Kinesis Part No.
036901	BS-DIO-114
038273	CV-DIO-106
038272	CV-DIO-107
042761	CV-DIO-207
036904	PA-DIO-101
2267.0802	PA-DIO-201
040859	PS-DIO-102
035686	PS-DIO-202
6025.2011	PS-DIO-302BK
6025.2010A	PS-DIO-302YW
6025.2011A	PS-DIO-402BK
2266.0804	PS-DIO-502BK
2266.0304	PS-GYN-102YW
6025.2010	PS-GYN-202
2266.0081	RS-GYN-103
5005.2004	BS-GYN-114
5020.2100	CV-GYN-106
5020.2200	CV-GYN-107
5020.2300	CV-GYN-108
2267.0032	PA-GYN-101
2266.0304B	WS-GYN-115
5805.1334	NS-DIO-101
40,651.00	LD-DIO-100
939016T	LD-DIO-102LL
6073.2070	LD-DIO-104
6074.1110	LD-DIO-105LL
5,053.12	LD-GYN-100LL

■ Gilson

OEM Part No.	Kinesis Part No.
E 50014	AG-GIL-116
E 50015	AG-GIL-216
E 50016	AG-GIL-316
3650170	CV-GIL-103T
3650180	CV-GIL-104T
E 50131	CV-GIL-109
E 50121	CV-GIL-110
E 45329	CW-GIL-113
E 45333	CW-GIL-213
E 500008	PA-GIL-101
E 50009	PA-GIL-201
E 50010	PA-GIL-301
E 50011	PA-GIL-401
400112	PS-GIL-102BK
400120	PS-GIL-102YW
400111	PS-GIL-202BK
400121	PS-GIL-202YW
400117	PS-GIL-302BK
400122	PS-GIL-302YW
400116	PS-GIL-402BK
400123	PS-GIL-402YW
400103	PS-GIL-502BK
400124	PS-GIL-502YW
38013222	PS-GIL-602BK
38013220	PS-GIL-602YW
38013224	PS-GIL-702BK
38013223	PS-GIL-702YW
27067131	NP-GIL-201
27067235	NP-GIL-202
27067132	NSS-GIL-201
27067236	NSL-GIL-202
27067251	NP-GIL-101
27067238	NP-GIL-102

Cross Reference

2707243	IPS-GIL-001
2707273 (PK5) or 27072755 (EA)	IPS-GIL-002
27067374	NNA-GIL-101
27067383	NPA-GIL-102
2954674	IPS-GIL-003
100326	LD-GIL-101
2140-0590	LD-GIL-105LL

■ Merck Hitachi

OEM Part No.	Kinesis Part No.
ANO-0835	CV-MH-105
885-1330	CV-MH-106
885-1331	CV-MH-107
N / A	CV-MH-205
810-1004	CV-MH-206
810-1005	CV-MH-207
635-1021	PA-MH-101
655-1080	PS-MH-102BK
N / A	PS-MH-102CL
ANO-0818	7010-999
810-3095	DVS-MH-100
890-2430	LD-MEH-100
890-2431	LD-MEH-100Z
982-1035	LD-MEH-101
122-2300	LD-MEH-103
885-1000	LD-MEH-104

■ Jasco

OEM Part No.	Kinesis Part No.
6560-405A/6778-H109A	CV-JAS-106
6560-404A/6778-H110A	CV-JAS-107
406 JA	CV-JAS-206
6778-23A	CV-JAS-306
6778-24A	CV-JAS-307
2305-0005A	PA-JAS-101
2305-0013A	PA-JAS-201

6560-H148A	PS-JAS-102YW
6778-26A	PS-JAS-202GY
5330-0097	LD-JAS-100LL
5330-0091	LD-JAS-101LL
5330-0092	LD-JAS-103LL

■ Perkin Elmer

OEM Part No.	Kinesis Part No.
0254-2076	BS-PE-114
09902128	BS-PE-214
02540177	CV-PE-106
02540197	CV-PE-107
02452150	CW-PE-216
02542313	GB-PE-116
N2915006	GB-PE-216
N2600124	PA-PE-101
N2600104	PA-PE-201
N2910511	PA-PE-301
N2910512	PA-PE-401
0990-7324	PS-PE-102YW
0990-7330	PS-PE-202BK
0990-7339	PS-PE-202YW
09923367	PS-PE-302YW
09923366	PS-PE-402BK
N2930023	NA-PE-101
09923270	006995
N2920149	LD-PER-100
N2922046	LD-PER-102
N2351285	LD-PER-103
0271 2224	LD-PER-104
0271 2266	LD-PER-105
B016-0917	LD-PER-160
B0148615	LD-PER-162

■ Shimadzu

OEM Part No.	Kinesis Part No.
228-12353-91	CV-SHI-106
228-09054-93	CV-SHI-107
228-33492-91	CV-SHI-306
228-34976-91	CV-SHI-307
288-32166-91	CV-SHI-506
228-39093-92	CV-SHI-606
228-18523-91	PA-SHI-301
228-17019-93	PA-SHI-401
228-35601	PA-SHI-601
228-35009-92	PA-SHI-701
228-35009-91	PA-SHI-801
228-21975-00	PS-SHI-402YW
228-35146-00	PS-SHI-602BK
228-32628-00	PS-SHI-602YW
228-35145-00	PS-SHI-802BK
228-28499-00	WS-SHI-615
228-21217-91	RS-SHI-101
228-21217-97	RS-SHI-102
228-21220-91	ST-SHI-101
228-25237-04	SY-SHI-101
228-33355	NS-SHI-101
228-35010-91	PA-SHI-901
228-35145-00	PS-SHI-802BK
062-65056-03	LD-SHI-100LL
228-34016-02	LD-SHI-101LL
062-65055-05	LD-SHI-102
062-65055-05	LD-SHI-102LL
228-37401-00	LD-SHI-103LL
670-14604-00	LD-SHI-104
670-14604-00	LD-SHI-104LL
670-14602-00	LT-SHI-101
228-34410-91	LT-SHI-104

Cross Reference

228-32445-91	LT-SHI-105
200-81500-01	LX-SHI-150MO

■ Thermo

OEM Part No.	Kinesis Part No.
A4114-010	BF-TSP-100
A3495-010	CV-TSP-106
A3490-010	CV-TSP-107
A3990-010	CV-TSP-108
A3893-010	CV-TSP-306
A3894-010	CV-TSP-308
00110-05110	CV-TSP-405
00950-30026	CV-TSP-506
00950-30021	CV-TSP-507
A4929-010	IF-TSP-100
A3102-010	PA-TSP-101
00950-30020Z	PA-TSP-301
00950-30020S	PA-TSP-401
00201-11324	PA-TSP-501
A 5018-010	PG-TSP-101
A2962-020	PS-TSP-102BK
A2962-050	PS-TSP-102CL
A2962-010	PS-TSP-102YW
00107-18111	PS-TSP-302CL
00107-18110	PS-TSP-402BK
00950-30004B	PS-TSP-502BK
00950-30004Y	PS-TSP-502YW
A3207-010	PS-TSP-602YW
A4412-010	PVS-TSP-100
A4448-010	RS-TSP-101
A2973-010	WA-TSP-116
A4848-010	WA-TSP-117
A2963-010	WS-TSP-115
00950-30025	WS-TSP-215
A3588-020	006660

3301-0100	SY-TSP-105
2508-0360	7010-999
3302-9540	LD-TSP-101
9551-0023	LD-TSP-102
108052	LD-TSP-106
9551-0022	LT-TSP-102
803247	LT-TSP-106
9551-0144	LX-TSP-101

■ Waters

OEM Part No.	Kinesis Part No.
700002275	CV-WAT-1005
700000254	CV-WAT-205
WAT033679	CV-WAT-306
WAT025028	CV-WAT-307
WAT060307	CV-WAT-506
WAT033326	CV-WAT-507
WAT270941	CV-WAT-608
WAT024960	CV-WAT-609
WAT024120	CV-WAT-610
WAT025216	CV-WAT-707
WAT270163	FS-WAT-915
WAT026524	PA-WAT-101
WAT025656	PA-WAT-301
WAT060304	PA-WAT-501
WAT270959	PA-WAT-601
WAT207069	PA-WAT-701
WAT030547	PA-WAT-801
WAT031788	PA-WAT-901
WAT026613	PS-WAT-102BK
WAT022934	PS-WAT-302CL
WAT026644	PS-WAT-502
WAT271066	PS-WAT-602BK
700001326	PS-WAT-602CL
WAT270938	PS-WAT-602YW

WAT034515	PS-WAT-802
WAT031790	PS-WAT-902
WAT270160	WS-WAT-615
WAT271017	WS-WAT-715
WAT270668	WS-WAT-815
WAT005139	FI-WAT-101-5
700002598	WS-WAT-915
700002599	PS-WAT-912
700002600	PA-WAT-911
700002596	CV-WAT-915
WAT073109	006690
WAT045559	SP-WAT-559
WAT045424	RK-WAT-424
700002791	SP-WAT-791
WAT271019	RK-WAT-019
WAT099499	LD-WAT-100
WAT080357	LD-WAT-101
WAT080678	LD-WAT-102
WAT052586	LD-WAT-104LL
WAS081142	LD-WAT-105LL
WAT021516	LD-WAT-134
WAT052665	LX-WAT-150MO
WAT080687	QL-WAT-687
WAT080244	CW-WAT-244
WAS081341	HW-WAT-341
WAT052669	MK-WAT-717
WAT052670	MK-WAT-510
WAT052587	MK-WAT-515
201000113	MK-WAT-1515
201000114	MK-WAT-1525
WAT052675	MK-WAT-600
700004073	MK-WAT-269-SM
WAT270944	MK-WAT-269

Lamps

OEM Equivalent

ABI

LD-ABI-100	ABI 757 759 783A 785A 1000S 980 120A 130A D2 Lamp	2900-0484
------------	---	-----------

ACS

LD-ACS-100	ACS LC 750 11E 12 D2 Lamp	
------------	---------------------------	--

Agilent

LD-AGI-100	Agilent 1050A D2 Lamp	79853-60002
LD-AGI-100LL	Agilent 1050A Long Life D2 Lamp	79853-60002
LD-AGI-101	Agilent 1050C 1050DAD 1090 D2 Lamp	79883-60002
LD-AGI-104	Agilent 1100 VWD, CE System D2 Lamp	G1314-60100
LD-AGI-104LL	Agilent 1100 VWD Long Life D2 Lamp	N/A
LD-AGI-105	Agilent 1100 DAD 8453 D2 Lamp	2140-0590
LD-AGI-105LL	Agilent 1100, 1200 DAD Long Life D2 Lamp	5181-1530
LD-AGI-106	Agilent 8452 D2 Lamp	08452-60104

Aminco

LD-AMI-100	Aminco DW2 DW2000 Spectrophotometer D2 Lamp	
------------	---	--

Analytik Jena

LD-ANJ-100	AnalytikJena (Zeiss) D2 Lamp	
------------	------------------------------	--

Bausch & Lomb

LD-BAU-100	Bausch & Lomb Genesys 2, 2PC & 5 D2 Lamp	2382A
LD-BAU-101	Bausch & Lomb 3100/3200	108035
LD-BAU-126	Bausch & Lomb 200 601 700 710 2000 DE50 Spectronic D2 Lamp	

Beckman

LD-BEC-100	Beckman 163 D2 Lamp	22 947029
LD-BEC-101	Beckman DU500 DU520 DU530 D2 Lamp	
LD-BEC-102	Beckman DU600 620 630 640 650 6000 6500 7000 7500 800 D2 Lamp	514366
LD-BEC-103	Beckman 166 D2 Lamp (pre-aligned)	239372
LD-BEC-104	Beckman 164 165 167 System Gold 5200 Acta 24-36 DU6 -50	236920
LD-BEC-105	Beckman 168 D2 Lamp (pre-aligned)	538711
LD-BEC-106	Beckman DU60 DU62 DU64 DU65 DU68 DU70 D2 Lamp	596791
LD-BEC-108	Beckman P/ACE 2000 D2 Lamp	359058
LD-BEC-109	Beckman P/ACE 5000 5010 5500 5510 D2 Lamp	142205
LD-BEC-110	Beckman P/ACE MDQ D2 Lamp	14467
LD-BEC-149	Beckman 155 D2 Lamp	22 887153

Biochrom

LD-BIC-100	Biochrom Genequant II D2 Lamp	
LD-BIC-101	Biochrom Series 2000/3000/4300, Libra 32/35S D2 Lamp	
LD-BIC-102	Biochrom U1000 D2 Lamp	
LD-BIC-103	Biochrom Genequant Pro D2 Lamp	

Biorad

LD-BIO-100	Biorad 1305 1306 D2 Lamp	
LD-BIO-101	Biorad 206, 300, 1790, BioDimensions Microsampler 100	930-6106
LD-BIO-103LL	Biorad D2 Long Life Lamp	

Bischoff

LD-BIS-100	Bischoff Lambda 1010 D2 Lamp	
------------	------------------------------	--

Bruker

LD-BRU-100LL	Brucker Long Life D2 Lamp	
--------------	---------------------------	--

Camspec

LD-CAM-100	Camspec M302 M330 M350 M501 D2 Lamp	
------------	-------------------------------------	--

OEM Equivalent

Cecil

LD-CEC-111	Cecil Series 2, 1000 to 9000, CE Series D2 Lamp	2202-0142
------------	---	-----------

Dionex

LD-DIO-100	Dionex CES1 CZESYST 2001 VDM-2 D2 Lamp	40651
LD-DIO-102LL	Dionex PDA-100, PDA-3000, AD-25 D2 Lamp	6080.2001 / 939016T
LD-DIO-104	Dionex Ultimate UVD 3000 Nano LC D2 Lamp	6073.2070
LD-DIO-105LL	Dionex Ultimate VWD MWD DAD 3000 3000RS 3100 3400 Long Life D2 Lamp	6074.1110
LD-DIO-108	Dionex Durrum D2 Lamp	
LD-GYN-100LL	Dionex / Gynkotek UVD 320 340S 160 170S 170U D2 Lamp	5053.1204

GAT

LD-DST-100	GAT D-Star DVW-10 D2 Lamp	
------------	---------------------------	--

GBC

LD-GBC-100	GBC LC1200 D2 Lamp	
LD-GBC-101	GBC LC1205, LC1206, LC1210 D2 Lamp	

Gilson

LD-GIL-100	Gilson Holochrome D2 Lamp	030510
LD-GIL-101	Gilson115/116/117/118/119/151/152/155/156 D2 Lamp	100326
LD-GIL-105	Gilson 170 DAD D2 Lamp	2140-0590
LD-GIL-105LL	Gilson 170 DAD Long Life D2 Lamp	5181-1530

ICI

LD-ICI-100	ICI LC1200 D2 Lamp	
------------	--------------------	--

Jasco

LD-JAS-100	Jasco 870 875 D2 Lamp	
LD-JAS-100LL	Jasco 870 875 D2 Long Life Lamp	5330-0097
LD-JAS-101LL	Jasco 970 975 (B & C) 1570 1575 2070 2075 Long Life Lamp	5330-0091
LD-JAS-102LL	Jasco 530, 550, 560 570 Long Life D2 Lamp	
LD-JAS-103LL	Jasco 975 (A series) D2 Long Life Lamp	5330-0092

Jenway

LD-JEN-101LL	Jenway 6400 Series D2 Long Life Lamp	
--------------	--------------------------------------	--

Knauer

LD-KNA-101	Knauer Wellchrom K2000 K2500 K2501 K2600 D2 Lamp	A4071
LD-KNA-101-LL	Knauer Wellchrom K2000 K2500 K2501 D2 Long Life Lamp	A4071
LD-KNA-102	Knauer 8700, 9700 2151 D2 Lamp	A0877
LD-KNA-103	Knauer Smartline PDA 2800	A4447

Kontron

LD-KON-101	Kontron 332/335/430/432/433/535/770 Uvikon 430 432 D2 Lamp	93-00636
LD-KON-102LL	Kontron 332/335/430/432/433/535/770 Long Life D2 Lamp	91-91494
LD-KON-103LL	Kontron 540DAD 540+ 545V long life D2 Lamp	54-02007
LD-KON-104	Kontron Uvikon 922, 923, 943, 930, 932, 933, 940 D2 Lamp	90-00782ST
LD-KON-105	Kontron 735, Uvikon 722, 730 D2 Lamp	54-02002
LD-KON-106	Kontron Uvikon XL XS CSA D2 Lamp	96-90297
LD-KON-107	Kontron Uvikon 600 700, 710 720 800 810 820 860 D2 Lamp	54-02002
LD-KON-134	Kontron 440 DAD D2 Lamp	91-91095

LDC

LD-LDC-100	LDC 3000 & 4000 Series Spectromonitor I II III D D2 Lamp	900347
------------	--	--------

LKB and Pharmacia

LD-LKB-100	LKB Pharmacia 4050 4054 2141 Ultrospec I II III D2 Lamp	
LD-LKB-101	LKB Productor 2140 D2 Lamp	8010-3135
LD-LKB-102	LKB Pharmacia Ultrospec 1000 2000 3000 4000 D2 + W Lamp	80-2106-17
LD-LKB-103	LKB Pharmacia 2151 D2 Lamp	

Lamps

OEM Equivalent

Merck

LD-MEH-100	Hitachi L & U Series (Not L2400 L2455 L7450 L7455)	HITA890-2430
LD-MEH-100Z	Hitachi LaChrom L2400 L7450 L7455 DAD D2 Lamp	HITA890-2430
LD-MEH-101	Hitachi 100-X, 124 D2 Lamp	982-1035
LD-MEH-102	Hitachi 101, 102, 111 D2 Lamp	
LD-MEH-103	Hitachi U1800, U2800 U2810 D2 Lamp	122-2300
LD-MEH-104	Hitachi 150 to 655, 2000, 3200 U3410 U3501 U4001 U4010	885-1000

Perkin Elmer

LD-PER-100	Perkin Elmer Series 200 D2 Lamp	N2920149
LD-PER-101	PE AAnalyst 100,300,3100,3110,3300 D2 Lamp	N0370119
LD-PER-102	Perkin Elmer Series 200 DAD D2 Lamp	N2922046
LD-PER-103	PE LC55, 65, 75 85 95 135 141 235 241 Lambda 1 3, Integral	N2351285
LD-PER-104	Perkin Elmer LC90 240 290 481 D2 Lamp	0271 2224
LD-PER-105	Perkin Elmer LC295 D2 Lamp	0271 2266
LD-PER-149	PE Lambda Array 3480 D2 Lamp	C6760011
LD-PER-160	PE Lambda 2 to 45 800 900 Bio, 55X Series LC480 D2 Lamp	B016-0917
LD-PER-161	PE 272 280 360 370 372 380 2280 2380 3030 4000 5000 5100	0057-0194
LD-PER-162	Perkin Elmer 1100, 2100, 4100	B0148615
LD-PER-175	PE M550S 550SE M551S M552 M554 555 D2 Lamp	092941
LD-PER-178	PE 400 410 420 430 D2 Lamp	

Pharmatest

LD-PHA-100	Pharmatest D2 Lamp	
------------	--------------------	--

Philips Unicam

LD-PHU-100	Thermo Unicam 4225 D2 Lamp	
LD-PHU-101	Thermo Unicam UV & Helios Series D2 Lamp	9423U/9004B
LD-PHU-102	Thermo Unicam 4110 D2 Lamp	4013-166-66428
LD-PHU-103	Thermo Unicam Crystal 200 Series D2 Lamp	
LD-PHU-104	Thermo Unicam SP700 800 1700 1750 1800 8000 8800 8820 Lamp	4013-160-24263
LD-PHU-105	Use LD-PHU-101	
LD-PHU-109	Thermo Unicam SP8450 8700 8710 8720 8730 8740 8750 D2 Lamp	
LD-PHU-121	Thermo Unicam SP8620 SP8625 D2 Lamp	
LD-PHU-127	Thermo Unicam SP8 8150 8200 8400 8500 8600 8740 5600 D2 Lamp	4013-163-75402
LD-PHU-171	Thermo Unicam 4021 4120 DAD D2 Lamp	4013-164-39401

Shimadzu

LD-SHI-100-LL	Shimadzu LC4A, LC6A,SPD2A,SPD6A SPD6AV SP4 LL D2 Lamp	062-65056-03
LD-SHI-101-LL	Shimadzu SPD-10A, AVP, AV, AVVP, M10AVP, 20A, 20AV Lamp	228-34016-02
LD-SHI-102	Shimadzu Spectrophotometer D2 Lamp	062-65055-05
LD-SHI-102LL	Shimadzu Spectrophotometer Long Life D2 Lamp	062-65055-05
LD-SHI-103LL	Shimadzu LC2010 Long Life D2 Lamp	228-37401-00
LD-SHI-104	Shimadzu SPD-M10A, M10AV D2 Lamp	670-14604-00
LD-SHI-104LL	Shimadzu SPD-M10A, M10AV D2 Long Life D2 Lamp	670-14604-00

Sun Chrom

LD-SUN-101	Sun Chrom Spectroflow 501 D2 Lamp	
LD-SUN-102	Sun Chrom Spectraflow 600 DAD D2 Lamp	

Thermowave

LD-THW-100	Thermowave D2 Lamp (J90)	
------------	--------------------------	--

TSP

LD-TSP-100	TSP 3100 D2 Lamp	
LD-TSP-101	TSP SP8200 8400 8480 8430 8440 8450 8490 D2 Lamp	3302-9540
LD-TSP-102	TSP UV100/1000/2000/3000 Focus Spectrachrom D2 Lamp	9551-0023
LD-TSP-103	TSP SA6510, SP770, SP970, SP8480XR, SP8773XR D2 Lamp	
LD-TSP-106	TSP UV 6000 DAD Surveyor D2 Lamp	108052
LD-TSP-107	TSP Spectrofocus	
LD-TSP-150	TSP LC871 D2 Lamp	

Varian

LD-VAR-100	Varian 2050 2550 5500 D2 Lamp	03-915303-99
LD-VAR-101	Varian 75 series, AA series, Spectra A series, Superscan	5610021800
LD-VAR-102	Varian Cary 1 4 5 100 300 400 500 D2 Lamp	5610013250
LD-VAR-103LL	Varian UV50/100/200 9050 Prostar 310 D2 Long Life Lamp	0391615691
LD-VAR-104	Varian Prostar 330 DAD D2 Lamp	0393570502
LD-VAR-105LL	Varian Prostar 325 335 Long Life D2 Lamp	110715400
LD-VAR-106	Varian Prostar 340 345 D2 Lamp	
LD-VAR-107	Varian Cary 210 219 2200/2300 D2 Lamp	5618000100
LD-VAR-122	Varian UV10 D2 Lamp	
LD-VAR-149	Varian UV634 635 Variscan D2 Lamp	56-100132-00

Waters

LD-WAT-100	Waters 480LC 481LC 481 Lambda Max D2 Lamp	WAT099499
LD-WAT-101	Waters 484 D2 Lamp	WAT080357
LD-WAT-102	Waters 486 D2 Lamp	700000356
LD-WAT-104LL	Waters 996, 2996 PDA Long Life D2 Lamp	WAT052586
LD-WAT-105LL	Waters 2487 Long Life D2 Lamp	WAS081142
LD-WAT-134	Waters 990 991 994 D2 Lamp	WAT021516

Visible Lamps

LT-BEC-100	Beckman Tungsten Lamp	
LT-CEC-111	Cecil Series 2, 1000 to 9000, CE Sereis Tungsten Lamp	
LT-KON-100	Kontron 900 Series Tungsten Lamp	
LT-MEH-100	Hitachi U Series Visible Lamp	
LT-PER-103	Perkin Elmer Lambda 1 & 3, 550A, 551 Tungsten Lamp	
LT-PER-160	PE Lambda 2 to 45 800 900 Bio, 55X series LC480 W Lamp	
LT-PHU-101	Unicam UV Series Tungsten Lamp	
LT-PHU-102	Unicam 5625 5675 8600 8700 8800 Series Tungsten Lamp	
LT-PHU-103	Unicam Helios Gamma and Delta Tungsten Lamp	
LT-PHU-104	Unicam Helios Epsilon Tungsten Lamp	
LT-SHI-101	Shimadzu SPD-10AV, AVP, AVVP, 20AV Tungsten Lamp	670-14602-00
LT-SHI-102	Shimadzu Spectrophotometer Tungsten Lamp	
LT-SHI-104	Shimadzu M10AVP Tungsten Lamp	228-34410-91
LT-SHI-105	Shimadzu RID 6A, RID 10A Tungsten Lamp	228-32445-91
LT-TSP-102	TSP UV100/1000/2000/3000 Tungsten Lamp	9551-0022
LT-TSP-106	TSP UV 6000 DAD Surveyor Tungsten Lamp	803247
LT-VAR-102	Varian Cary 100/300 Visible Source Lamp	5610021700
LT-VAR-103	Varian Cary 400/500 Visible Source Lamp	5610013900

Xenon Lamps

LX-AGI-100	Agilent 1046 FLD, Xe Lamp	2140-0549
LX-AGI-101	Agilent 1100 FLD, Xe Lamp	2140-0600
LX-DIO-150S	Dionex Xenon Lamp	
LX-GIL-150MO	Gilson 122 Xe Lamp	
LX-JAS-150MO	Jasco 820 821 Xe Lamp	
LX-JAS-274	Jasco 920 921 1520 2020 Xe Lamp	
LX-KON-150MO	Kontron SFM25 Xe Lamp	
LX-LDC-150MO	LDC FM4100 Xe Lamp	
LX-MEH-152H	Hitachi Fluorescence Detector Xe Lamp	
LX-PER-150MO	PE 203 204 MPF2A MPF3 MPF4 650 Xe Lamp	
LX-SHI-150MO	Shimadzu RF1501.5301 5000 Xe Lamp	200-81500-01
LX-SHI-150S	Shimadzu RF540 RF535 RF551 RF500 RF10A RF10AXL Xe Lamp	
LX-SHI-75XE	Shimadzu RF530 RF510 Xe Lamp	
LX-TSP-101	TSP FL2000, FL3000, LC304 Xe Lamp	9551-0144
LX-VAR-100	Varian Prostar 320, UV-1 Xe Lamp	R007200556
LX-VAR-101	Varian 9070 Xe Lamp	
LX-VAR-102	Varian Cary 50 Xenon Lamp (Bare Lamp Only)	
LX-VAR-152H	Varian Prostar 363 Xe Lamp	
LX-WAT-150MO	Waters 470 474 Xe Lamp	WAT052665

Fittings, filters and tubing

Fittings

Part No.	Description	Port	Pressure Rating	Material	Qty.
Low Pressure Fittings For Solvent Inlet Lines					
Flangeless Fittings (including Ferrules)					
XP-315x	Flangeless Fitting for 1/8" OD Tubing	1/4"-28 Flat Bottom	500psi (34bar)	ETFE Natural/ETFE Yellow	PK/10
XP-345x	Flangeless Fitting for 1/8" OD Tubing	1/4"-28 Flat Bottom	500psi (34bar)	PFA Natrual/ETFE Yellow	PK/10
XP-201x	Flangeless Fitting for 1/16" OD Tubing	1/4"-28 Flat Bottom	2,000psi (139bar)	Delrin Black/ETFE Blue	PK/10
High Pressure (HPLC) Fittings					
One-Piece Fingertight Fittings					
F-120x	Fingertight Fitting for 1/16" OD Tubing	10-32 Coned	5,000psi (345bar)	PEEK, Natural	PK/10
F-130x	Fingertight Fitting for 1/16" OD Tubing, Long	10-32 Coned	5,000psi (345bar)	PEEK, Natural	PK/10
Stainless Steel Fitting Nuts					
U-400X	Fitting Nut for 1/16" OD Tubing (Requires Ferrule)	10-32 Coned	20,000psi (1,380bar)	SST	PK/10
U-401x	Ferrule for 1/16" OD Tubing	10-32 Coned	20,000psi (1,380bar)	SST	PK/10
Ultra High Pressure (UHPLC) Fittings					
Single Piece					
VHP-320x	VHP Fitting for 1/16" OD Tubing	10-32 Coned	25,000psi (1,720bar)	SST/PK	Each
VHP-325x	VHP Fitting for 1/16" OD Tubing, Long	10-32 Coned	25,000psi (1,720bar)	SST/PK	Each
Rheodyne Injection Valve Fittings					
6000-282	One-Piece RheFlex Fitting for 1/16" OD Tubing	10-32 Coned	5,000psi (345bar)	PEEK, Natural	PK/10

Filters And Flow Control

Part No.	Description	Porosity	Material	For Tubing	Qty.
Solvent Inlet Filters - Used In Solvent Bottle					
A-302A	Inlet Solvent Filter (screw in Type), with Flangeless Fittings	10µm	SST, PCTFE	1/8" OD	EA
Bottom of the Bottle Inlet Filters - Used In Solvent Bottle					
A-550	SST Filter Assembly, including Cup and Fitting	10µm	SST	1/8" OD	EA
A-446	Biocompatible Filter Assembly, UHMWPE, including Cup and Fitting	10µm	UHMWPE	1/8" OD	EA
Bottom of the Bottle Inlet Filters - Replacement Cups					
A-520x	Filter Cup for A-550	10µm	SST		PK/10
A-427	Biocompatible Filter Cup for A-446	10µm	UHMWPE		PK/5
Inline Solvent Filters - Used Between Pump and Injection Valve					
A-314	Inline Solvent Filter Assembly	2µm	SST	1/16" OD	EA
A-430	Inline Solvent Filter Assembly, Biocompatible	2µm	PEEK	1/16" OD	EA
Pre-Column Filters - Replacement Frits					
A-100X	Replacement Frits for A-314	2µm	SST		PK/10
A-429X	Replacement Frits for A-430	2µm	PEEK		PK/10
Pre-Column Filters - Used Between Injection Valve and Column					
A-318	Pre-Column Filter Assembly	0.5µm	SST	1/16" OD	EA
A-356	Pre-Column Filter Assembly, Biocompatible	0.5µm	PEEK	1/16" OD	EA

Pre-Column Filters - Replacement Frits

A-102x	Replacement Frits for A-318	0.5µm	SST	PK/10
A-701	Replacement Frits for A-356	0.5µm	PEEK	EA

Back Pressure Regulator Holders

P-465	BPR Holder, Biocompatible		PEEK	EA
-------	---------------------------	--	------	----

Back Pressure Regulator Cartridges

P-761	40psi (2.8bar) Cartridge for P-465		PEEK	EA
P-761	75psi (5.2bar) Cartridge for P-465		PEEK	EA
P-763	100psi (7bar) Cartridge for P-465		PEEK	EA
P-764	250psi (17bar) Cartridge for P-465		PEEK	EA
P-765	500psi (34bar) Cartridge for P-465		PEEK	EA
P-795	750psi (52bar) Cartridge for P-465		PEEK	EA
P-796	1000psi (2.8bar) Cartridge for P-465		PEEK	EA

Shut Off Valve

P-733	Shut Off Valve		PEEK	EA
-------	----------------	--	------	----

Tubing

Part No.	Material	OD	ID	Colour	Qty.
----------	----------	----	----	--------	------

Low Pressure Tubing For Solvent Inlet Lines

1521	FEP Fluoropolymer	1/8"	0.062" (1.55mm)	Natural	6m (20ft)
1548	FEP Fluoropolymer	1/16"	0.020" (0.500mm)	Natural	6m (20ft)

High Pressure Tubing

1535	PEEK	1/16"	0.005" (0.125mm)	Red	1.5m (5ft)
1536	PEEK	1/16"	0.007" (0.175mm)	Yellow	1.5m (5ft)
1531B	PEEK	1/16"	0.010" (0.250mm)	Blue	1.5m (5ft)
1532	PEEK	1/16"	0.020" (0.500mm)	Orange	1.5m (5ft)
1533	PEEK	1/16"	0.030" (0.750mm)	Green	1.5m (5ft)
U-157	Stainless Steel**	1/16"	0.005" (0.125mm)	Red	1m
U-131	Stainless Steel**	1/16"	0.007" (0.175mm)	Black	1m
U-133	Stainless Steel**	1/16"	0.010" (0.250mm)	Blue	1m
U-135	Stainless Steel**	1/16"	0.020" (0.500mm)	Yellow	1m
U-137	Stainless Steel**	1/16"	0.030" (0.750mm)	White	1m

** Stainless steel tubing available in pre-cut lengths

Low Pressure Tubing Inlet Kits

S-16541-1	Low Pressure Tubing Kit, Agilent 1100
S-1667	Low Pressure Tubing Kit, Waters Alliance (incl. Seal and Needlewash Supply lines)

Customised maintenance support
packages plus IQ, OQ and PV.
For all major analytical systems.

Please call to discuss your requirements
on 01480 217181 or email sales@kinesis.co.uk



 **Kinesis**
Scientific Experts

For current HPLC Spares price list please contact +44(0)1480 212122

Kinesis Detector Lamps and Instrument Spares



High Quality Deuterium UV Lamps and Pump Spares for all Leading HPLC Instrumentation Brands

kinesis-group.com

 **Kinesis**
Scientific Experts

**KINESIS LONG LIFE LAMPS FOR ALL LEADING
HPLC UV DETECTORS INCLUDING:**



Agilent

1100 1200 1260 1290

Kinesis Part Number	OEM Equivalent	Detector Models	Kinesis Guarantee	Matches OEM
LD-AGI-104LL	G1314-60100, G1314-60101	G1314A/B/D/E/F VWD	2000Hrs/1 Year	✓
LD-AGI-105LL	5181-1530 2140-0813 2140-0820	G1315A/B/C/D DAD G1365A/B/C/D DAD	2000Hrs/1 Year	✓
LD-AGI-108LL	5190-0917	G4212A/B (8-Pin)	2000Hrs/1 Year	✓

Waters

996 2996 2487 Alliance

Kinesis Part Number	OEM Equivalent	Detector Models	Kinesis Guarantee	Matches OEM
LD-WAT-104LL	WAT052586	996 2996	2000Hrs/1 Year	✓
LD-WAT-105LL	WAS081142	2487 Alliance	2000Hrs/1 Year	✓

Shimadzu

SPD10A AVP AVVP M10AVP 20A 20AV 2010

Kinesis Part Number	OEM Equivalent	Detector Models	Kinesis Guarantee	Matches OEM
LD-SHI-101LL	228-34016-02	SPD10A AVP AVVP M10AVP 20A 20AV	2000Hrs/1 Year	✓
LD-SHI-103LL	228-37401-00	2010	2000Hrs/1 Year	✓

Dionex

Ultimate 3000 3000RS 3100 3400 PDA100 PDA3000
Gynkotek UVD 320 340S 160 170S 170U

Kinesis Part Number	OEM Equivalent	Detector Models	Kinesis Guarantee	Matches OEM
LD-DIO-102LL	939016T	PDA100 PDA3000	2000Hrs/1 Year	✓
LD-DIO-105LL	6074.1110	ULTIMATE	2000Hrs/1 Year	✓
LD-GYN-100LL	5053.1200	UVD 320 340S 160 170S 170U	2000Hrs/1 Year	✓

Merck Hitachi

LaChrom

Kinesis Part Number	OEM Equivalent	Detector Models	Kinesis Guarantee	Matches OEM
LD-MEH-100LL	892-2550	All L and U Series	2000Hrs/1 Year	✓

We have a comprehensive range of lamps not listed here all available on request for many other makes and models of UV HPLC detectors and Spectrophometers.

Please contact Kinesis for full listing or visit kinesis-group.com

Guaranteed quality long life hplc lamps

Deuterium 2000 Hour Lamps for HPLC UV Detection

Our Lamps

Kinesis have been manufacturing lamps since 2002 and we now have over 10 years experience in precision lamp alignment. Using processes verified by the world's leading lamp manufacturers, Kinesis are able to offer the highest quality lamp on the market today whilst offering customers huge price savings.

With sales last year of over 10,000 lamps this makes Kinesis the world's largest 3rd party lamp manufacturer with repeat business in every market sector across the globe.

Key Points

- 10 years lamp manufacturing experience
- World's largest 3rd party lamp producer
- Over 10,000 lamps sold every year
- Price saving benefit



Kinesis Quality Guarantee

By working closely with all the leading Deuterium lamp manufacturers, Kinesis are able to use in our alignment process the same bare lamp used by the original equipment manufacturer in the production of their branded detector lamps.

This enables Kinesis to offer, with complete confidence, the same warranties and guarantees you would receive when purchasing branded lamps from the original equipment manufacturers (OEM).

Key Points

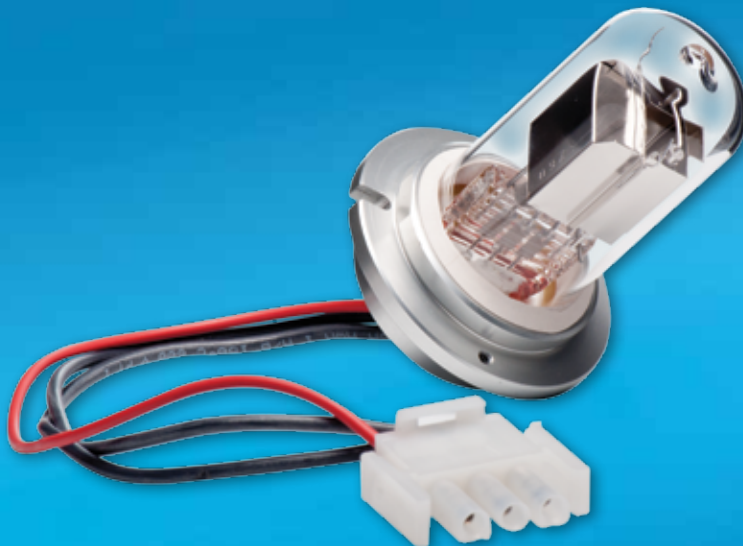
- OEM equivalent lamps
- Same bare lamps as used to produce OEM lamp
- Guarantees and warranties match those offered by OEM

Certified Lamp Production

Kinesis lamps are manufactured using industry verified processes following stringently controlled ISO 9000 certified procedures. Every lamp we produce is traced by its serial number through the manufacturing process and tested, with results recorded, at every step – with a final QC intensity check in the original manufactures detector. Only at this point is the lamp certified and released for sale.

Key Points

- ISO 9000 certified manufacturing procedures
- Industry verified processes
- Lamps QC tested in original detector for final intensity readings
- Lamps certified for quality at every step



Kinesis HPLC Instrument Spares

High quality HPLC pump and autosampler spares for all leading instrument models including:

Agilent, ABI, Beckman, Dionex, Gilson, Jasco, Knauer, Merck Hitachi, Perkin Elmer, Shimadzu, Thermo, Varian and Waters



Pump Spares

- Piston seals
- Check valves
- Piston assemblies

Autosampler/Injection Spares

- Needles
- Syringes
- Needle seats
- Rotor seals

IDEX Accessories

- Tubing
- Fittings
- Filters

Maintenance Kits

- Kinesis quality preventative maintenance kits for instrumentation service including pump and autosampler spares
- Maintenance kits now available for the following instrumentation
 - o Agilent
 - o Shimadzu
 - o Waters
- Other kits to follow

Price and Quality

- Highest quality parts
- Huge price savings



To ensure the highest product quality possible, Kinesis source their spare parts from the same manufacturers that are approved by many of the world's leading brands.

KLTD-1536-0915



Kinesis recognises all trademarks and registered trademarks. E&OE

 **Kinesis**
Scientific Experts

sales@kinesis-group.com kinesis-group.com